



NORTHERN
GRAPHITE



INNOVATION UNLEASHED

ADVANCING MINING • POWERING BATTERIES • REDEFINING CARBON

TSXV: NGC | OTC: NGPHF | FRA & XSTU: 0NG



FORWARD LOOKING STATEMENTS

This presentation may contain forward-looking information and forward-looking statements (collectively, “forward-looking statements”) which relate to future events or future performance and reflect management’s expectations and assumptions regarding Northern Graphite Corporation’s (the “Company” or “NGC”) growth, results, performance and business prospects and opportunities. Such forward-looking statements may include, but are not limited to, statements with respect to: the expansion potential of the Lac des Iles mine, the reactivation and expansion potential of the Okanjande mine, the development of the Bissett Creek project and the Company’s plans to develop a Battery Anode Material facility; the timelines and costs related to the various plans described in this presentation and their expected results; targets, estimates and assumptions in respect of production and prices; amount and type of future capital expenditures and capital resources; mineral reserves and mineral resources; anticipated grades; recovery rates; future financial or operating performance; costs and timing of the development of new deposits; production decisions; timing of the receipt of governmental approvals and/or acceptances; costs and timing of construction of mines and facilities; operating expenditures; and costs and timing of future exploration and environmental and reclamation expenses.

Often, but not always, forward-looking statements can be identified by the use of words such as “plans”, “expects”, “is expected”, “budget”, “scheduled”, “estimates”, “forecasts”, “intends”, “anticipates”, or “believes” or variations (including negative variations) of such words and phrases, or state that certain actions, events or results “may”, “could”, “would”, “might” or “will” be taken, occur or be achieved.

Forward-looking statements involve known and unknown risks, uncertainties and other factors which may cause the actual results, performance or achievements of the Company and/or its subsidiaries and/or its affiliated companies to be materially different from any future results, performance or achievements expressed or implied by the forward-looking statements. There can be no assurance that future required regulatory approvals will be obtained or that anticipated transactions or proposed work and construction programmes will be completed satisfactorily.

Such forward-looking statements reflect management’s current beliefs and are based on information currently available to it. Although the Company has attempted to identify important factors that could cause actual actions, events or results to differ materially from those described in forward-looking statements, there may be other factors that cause actions, events or results to differ from those anticipated, estimated or intended.

There can be no assurance that forward-looking statements will prove to be accurate, as actual results and future events could differ materially from those anticipated in such statements. Accordingly, readers should not place undue reliance on forward-looking statements due to the inherent uncertainty therein.

Forward-looking statements contained herein are made as of the date of this presentation and the Company disclaims any obligation to update any forward-looking statements, whether as a result of new information, future events or results or otherwise except as may be required by applicable securities laws.

Unless indicated otherwise, all dollar figures are in US dollars.

Gregory Bowes, P.Geo., a director of the Company, is the Qualified Person responsible for the technical content in this presentation.

This presentation shall not constitute an offer to sell or the solicitation of an offer to buy nor shall there be any sale of the Company’s securities in any jurisdiction except in accordance with applicable securities laws.



CAUTIONARY NOTE TO UNITED STATES INVESTORS

REGARDING MINERAL RESOURCES

Disclosure regarding mineral resource and mineral reserve estimates included in this presentation were prepared in accordance with National instrument 43-101 - *Standards of Disclosure for Mineral Projects* (“NI 43-101”). This presentation uses the terms “mineral resources”, “measured resources”, “indicated resources” and “inferred resources”, as each of these terms is defined in accordance with the CIM Definition Standards on Mineral Resources and Reserves adopted by the Canadian Institute of Mining, Metallurgy and Petroleum Council (the “CIM Definition Standards”), as required by NI 43-101. Unless otherwise indicated, all resource estimates contained in this presentation have been prepared in accordance with the CIM Definition Standards, as required by NI 43-101.

NI 43-101 is a rule developed by the Canadian Securities Administrators that establishes standards for all public disclosure an issuer makes of scientific and technical information concerning mineral projects. NI 43-101 differs significantly from the disclosure requirements of the U.S. Securities and Exchange Commission (the “SEC”) generally applicable to U.S. companies. For example, the definitions of the terms “mineral resources”, “measured resources”, “indicated resources” and “inferred resources” defined in NI 43-101 and the CIM Definition Standards differ from the definitions in the disclosure requirements promulgated by the SEC. Accordingly, information contained in this presentation will not be comparable to similar information made public by U.S. companies reporting pursuant to SEC disclosure requirements.

United States investors are cautioned not to assume that all or any part of measured or indicated resources will ever be converted into reserves. Inferred resources are in addition to measured and indicated resources. Further, inferred resources have a great amount of uncertainty as to their existence and as to whether they can be mined-economically. It cannot be assumed that all or any part of any inferred resources will ever be upgraded to a higher category.



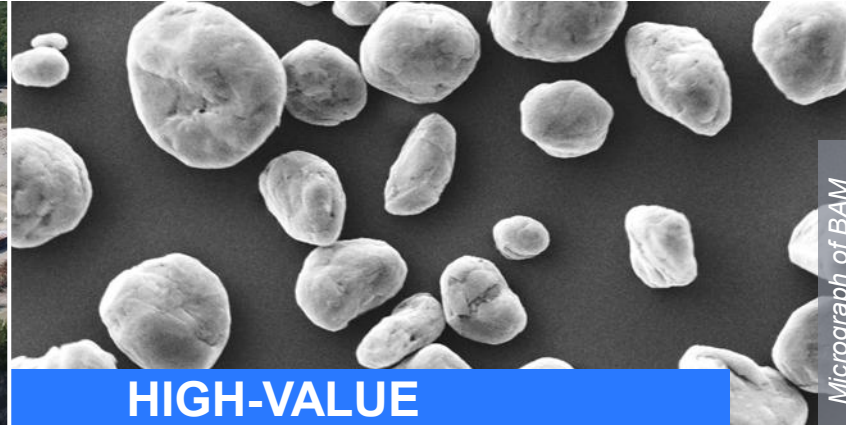
WHY INVEST?

THE ONLY G7 GRAPHITE PRODUCER BUILDING A SCALED EX-CHINA MATERIAL PLATFORM



CRITICAL NATURAL GRAPHITE SUPPLIER

- Only producing natural graphite asset in North America and the G7
- Secure, long-term graphite feedstock from Canada & Namibia
- Proven industrial supplier with 35+ years operating history



Micrograph of BAM

HIGH-VALUE TRANSFORMATION

- Proven Battery Anode Material (BAM) with optimized coating
- OEM validation and qualification underway
- Market-leading anode technology, secured through licensing, with scalable processing



CAPITAL-EFFICIENT EXECUTION

- Partner-led project model reduces capital intensity
- Strategic JV with established Saudi Arabian industrial partner Obeikan Investment Group
- Saudi Arabia BAM production targeted for 2028 supplied by NGC Namibia feedstock

NORTHERN GRAPHITE IS POSITIONED TO MEET GROWING EX-CHINA GRAPHITE DEMAND



UNLOCKING GRAPHITE SUPPLY

OPERATING TODAY. SCALING WITH DEMAND.

THE BATTERY TRANSITION IS CONSTRAINED BY GRAPHITE PROCESSING CAPACITY



CHINA DOMINANCE

- >90% of graphite processing in China
- Supply chains remain highly concentrated



PROCESSING CONSTRAINT

- Processing, not mining, limits supply growth
- Qualification & scale-up require time & expertise



SUPPLY CONSTRAINT

- New BAM supply takes years to build
- BAM demand is accelerating rapidly

NGC ENABLES FAST ROUTE TO MARKET, SCALABLE, NON-CHINESE GRAPHITE SUPPLY



GLOBAL FOOTPRINT

- Non-Chinese production base (Canada & Namibia)
- Secure, diversified feedstock



BAM CAPABILITY

- Integrated Mine-to-market BAM production
- Customer qualification and validation underway



EXECUTION & SCALE

- First BAM production targeted for 2028
- Scalable, partner-led growth



FROM MINE TO BATTERY ANODE MATERIAL (BAM)

EXECUTING A PHASED, DEMAND-DRIVEN EX-CHINA SUPPLY CHAIN

TECHNOLOGY CENTER

BAM development in Frankfurt, Germany

- Primary BAM innovation center
- In-house battery testing and validation
- Direct support for customer qualification

PHASE I: EXECUTION BLUEPRINT

BAM plant project in Yanbu, Saudi Arabia

- Clear track to 2028 production
- JV with Obeikan Investment Group
- Feedstock secured from Namibia

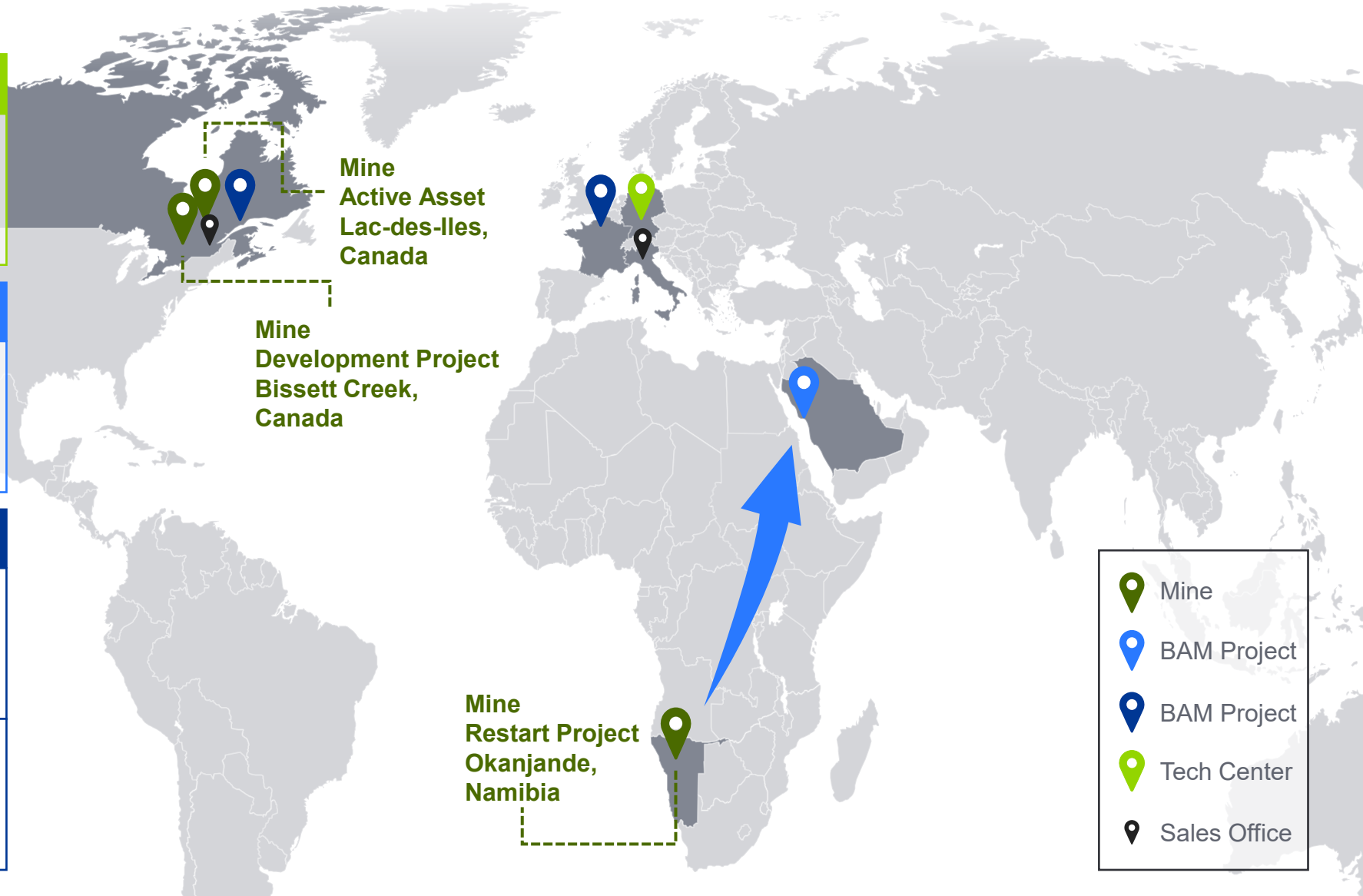
PHASE II: SCALE-UP

BAM plant project in Baie-Comeau, Canada

- Serving the North American market
- Canadian feedstock integration
- Access to ice-free deep-water port

BAM plant project in France

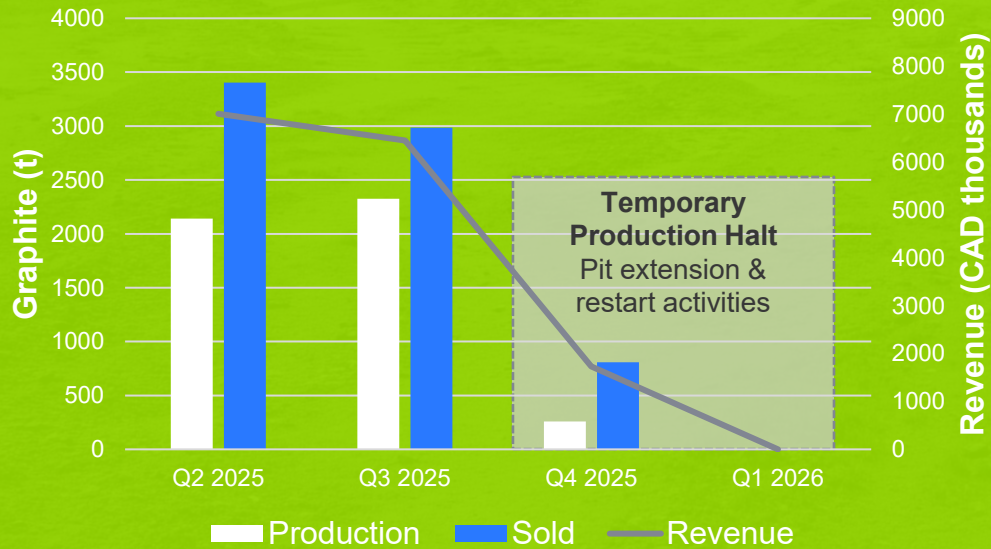
- Serving the European market
- Feedstock flexibility (Namibia)
- CRMA strategic project status





NORTHERN GRAPHITE

YOUR SOLUTION FOR CRITICAL MINERALS SUPPLY



North America's Only
Natural Graphite
Producer



Path to fully integrated
Battery Anode
Material (BAM)
Production by 2028



GLOBAL FOOTPRINT

- 75+ Employees
- 5 Sites
- 3 Continents



MINING

- 1 active; 1 restart; 1 dev. project
- 3.29 Mt of Cg M&I Resource
- Ready to scale with demand



BATTERY MATERIALS

- Fully equipped battery lab
- Licensed process technology
- Material qualification ongoing



MARKET DRIVEN

- Existing flake customer base
- SPG and CSPG ready
- Customer driven expansion



ELECTRIFICATION UNLEASHED

ELECTRIFICATION IS ACCELERATING DEMAND FOR CRITICAL BATTERY MATERIALS



Electrification is accelerating demand for critical battery materials across EVs, energy storage, and advanced applications.

At the same time, supply remains constrained and increasingly strategic.

This dynamic is reshaping global materials markets and creating opportunities for new supply leaders.



ELECTRIFICATION IS BATTERY-ENABLED – GRAPHITE-INTENSIVE

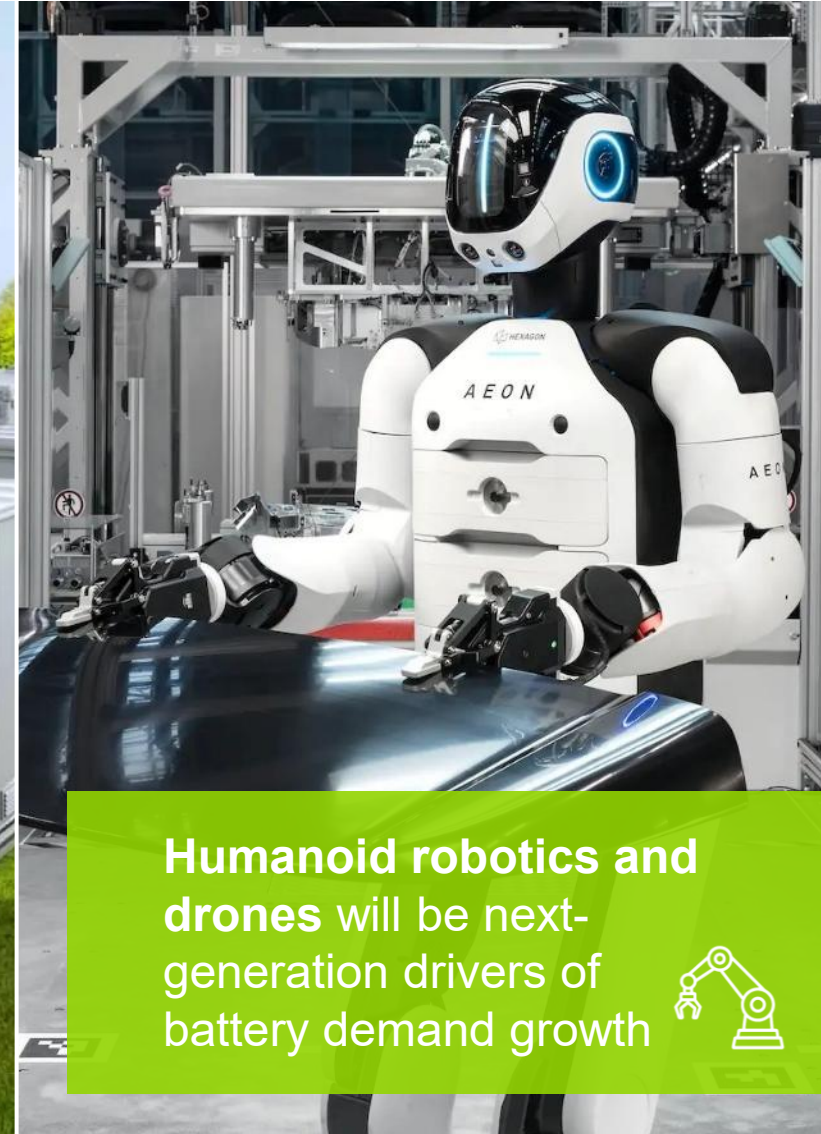
DRIVING THE GLOBAL ENERGY TRANSITION



26% CAGR in combined global BEV and PHEV sales (5 years), underpinning battery demand growth



62% CAGR in battery energy storage systems deployment (5 years), renewables-driven surge in battery demand



Humanoid robotics and drones will be next-generation drivers of battery demand growth



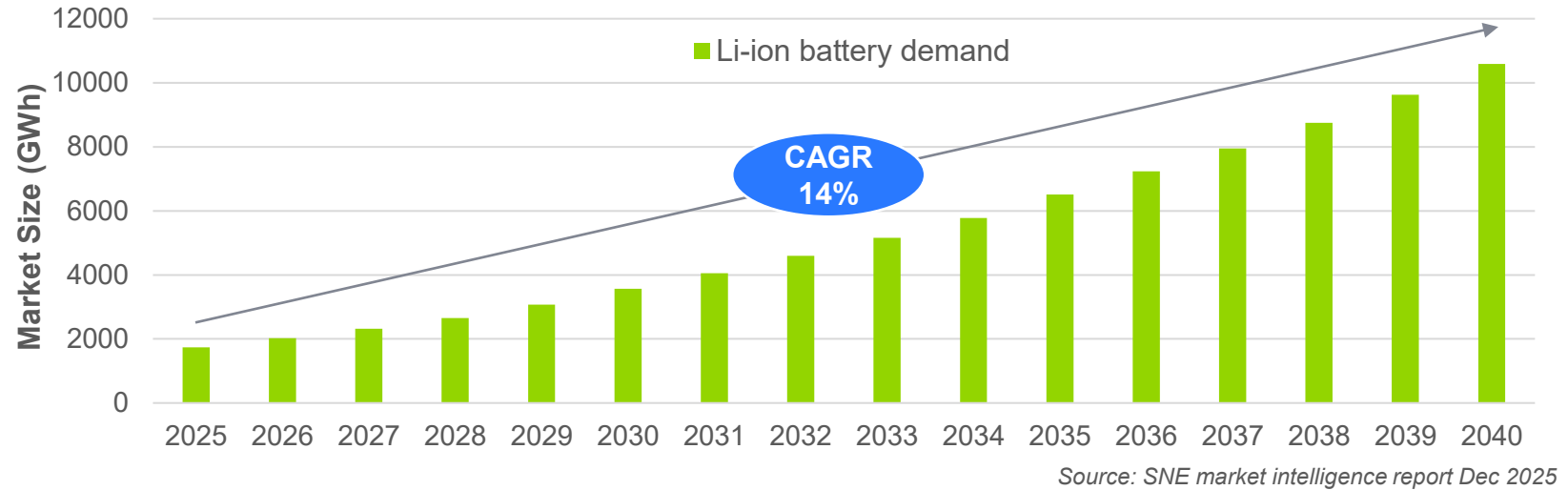


E-MOBILITY – MAKES GRAPHITE A STRUCTURAL DEMAND MATERIAL

GRAPHITE IS THE LARGEST COMPONENT IN LITHIUM-ION BATTERIES



Graphite is the largest component in Li-ion batteries, with up to **58 kg (~50%)** per **65 kWh** EV battery system.



Breakdown of battery components



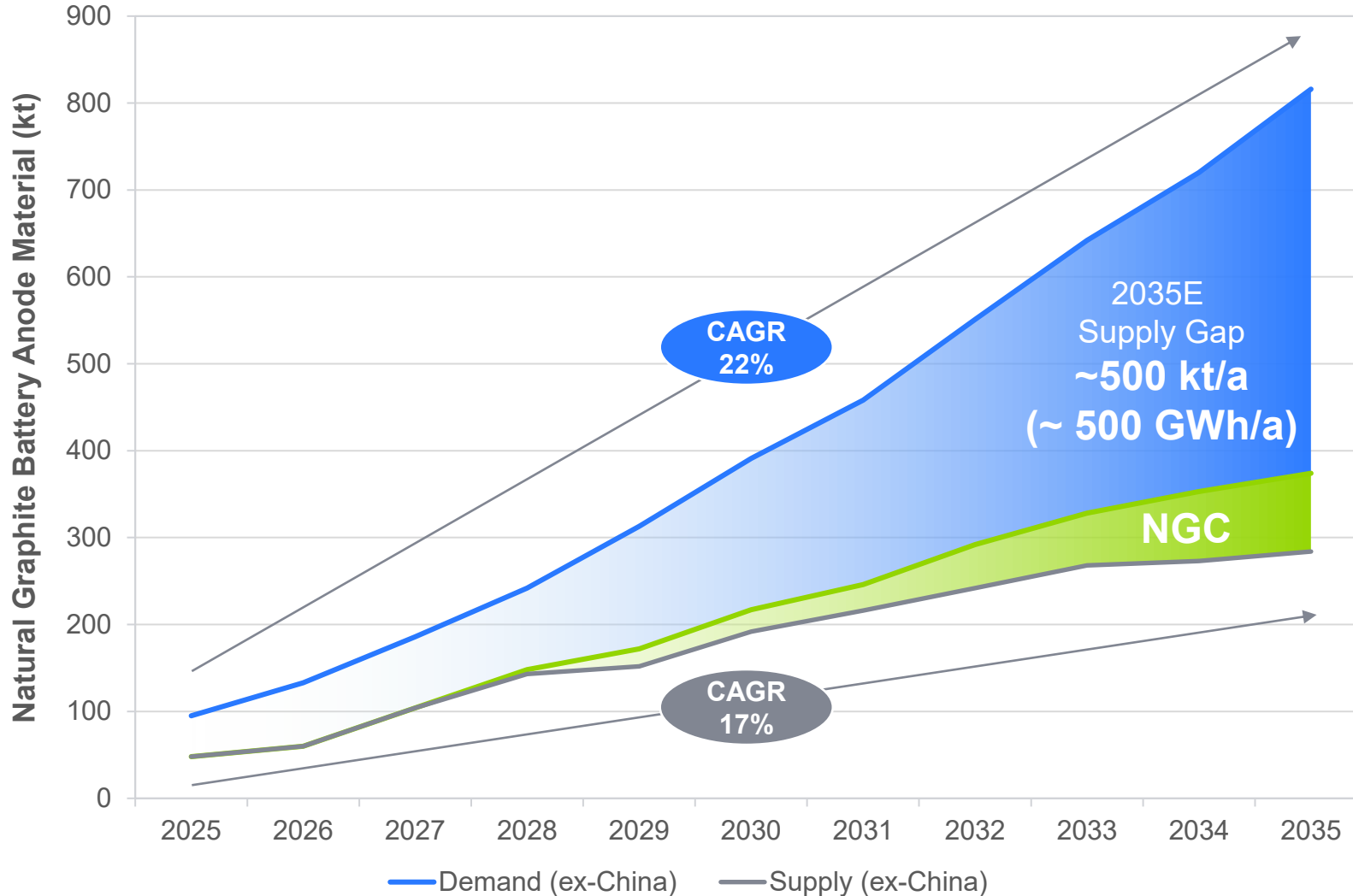
	Component	Mass per kWh (kg)	Mass per car (kg)
Cathode	Nickel (Ni)	0.65	42
	Manganese (Mn)	0.08	5
	Cobalt (Co)	0.08	5
	Lithium (Li)	0.10	6
	Carbon additives (C)	0.03	2
Anode	Graphite (C)	0.90	58
	Carbon additives (C)	0.01	1

Resource breakdown example of 65 kWh EV assuming NMC811 chemistry



NATURAL GRAPHITE BAM MARKET

GROWING EX-CHINA SUPPLY DEFICIT



Source: SNE market intelligence report Dec 2025



Ex-China BAM Demand

- Rapid electrification drives sustained demand for natural graphite-based BAM
- 22% average annual growth expected through 2035
- ~800 kt BAM required by 2035 to support ~800 GWh of battery capacity



Ex-China BAM Supply


- Structural supply deficit already exists today
- Supply expansion lags accelerating demand growth
- Forecasted supply gap widens through 2035



GLOBAL GEOPOLITICS: SITUATION CRITICAL

DIVERSIFICATION IS BECOMING CRITICAL TO EX-CHINA SUPPLY RESILIENCE



Trade Barriers
Significant risks to  global graphite supply

China Dominance

- 80% of natural graphite concentrate
- 99% of spherical purified graphite (SPG)
- 97% of natural graphite BAM in 2023

Global alarm as China's critical mineral export curbs take hold

By Jarrett Renshaw, Ernest Scheyder and Jeff Mason



June 4, 2025 5:21 AM GMT+2 · Updated a day ago

The Graphite Supply War: How Global Shortages Threaten Industries

BY JOHN ZADEH ON APRIL 1, 2025



Supply Chain Vulnerability
Exposure to trade and operational disruptions 



NATURAL GRAPHITE PORTFOLIO

SERVING INDUSTRIAL AND BATTERY MARKETS – TODAY AND TOMORROW

Adv. Materials

Defense

OUR SOLUTION
FOR A RESILIENT,
DIVERSIFIED
CUSTOMER BASE

Industrial Applications

BESS

Robotics

xEV



GROWING PRODUCTION

NEAR-TERM, MODULAR GROWTH FROM EXISTING AND BROWNFIELD ASSETS



TARGETING 100,000 TPY OF PRODUCTION FROM 3.29 MT OF CONTAINED C_g IN MEASURED & INDICATED RESOURCES WITH MODULAR EXPANSION POTENTIAL ACROSS

LAC DES ILES, CANADA 25,000 TPY



- North America's only producing graphite mine with 30+ year production history

OKANJANDE, NAMIBIA 31,000 TPY IN PHASE I



- Brownfield restart project positioned to support future BAM feedstock supply

BISSETT CREEK, CANADA 44,000 TPY IN PHASE I

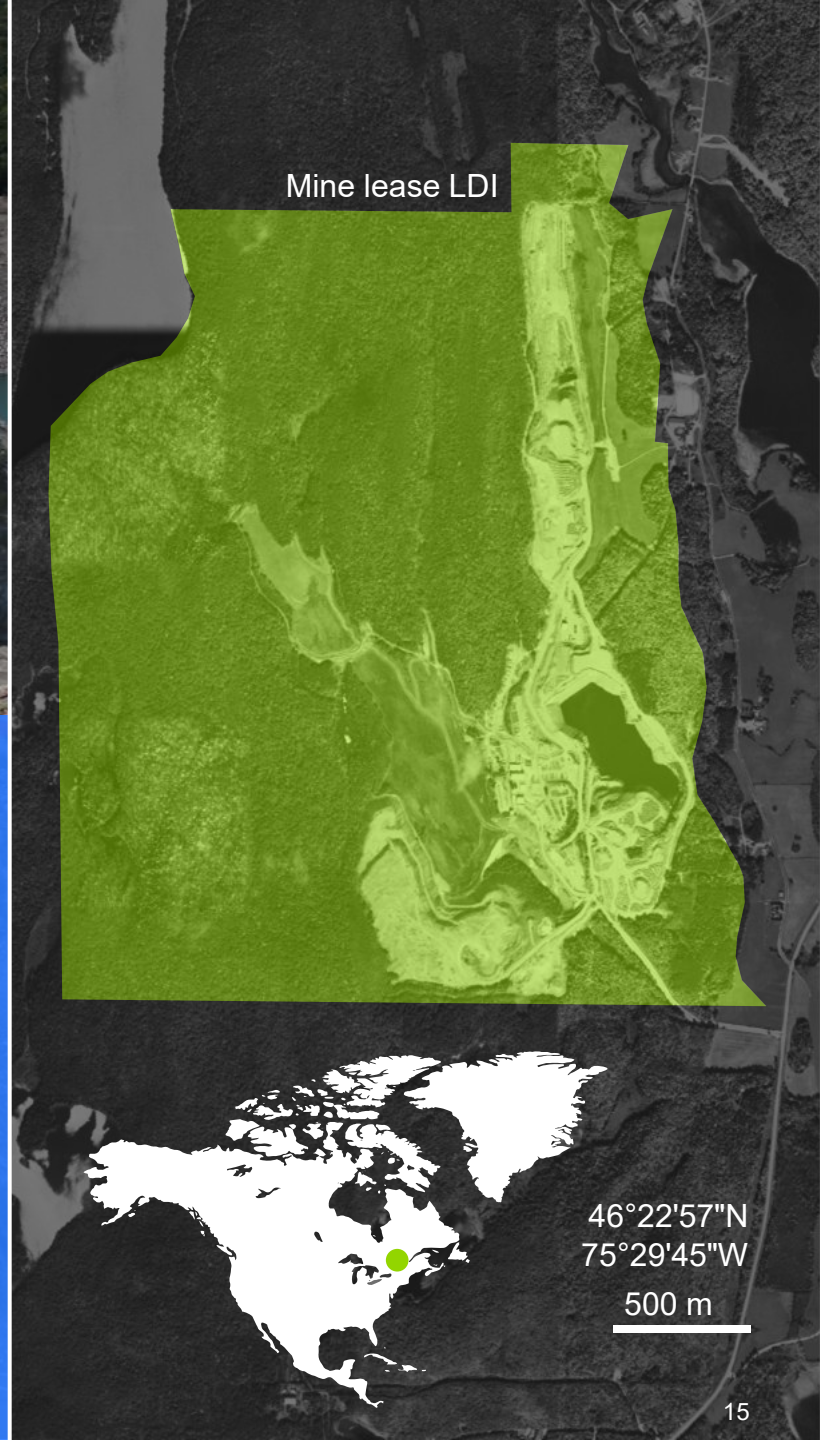


- Near construction-ready development project with strong large-flake exposure



LAC DES ILES (LDI), CANADA

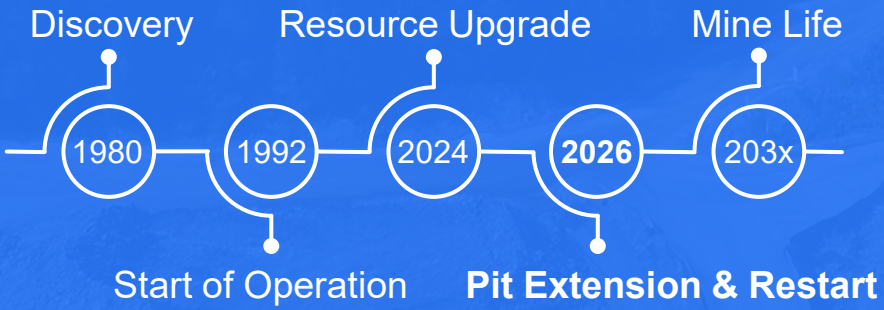
NORTH AMERICA'S ONLY PRODUCING GRAPHITE MINE



Mine lease LDI

46°22'57"N
75°29'45"W
500 m

Mine History



Status Only **Active**
natural graphite mine in G7

Quality **35 years**
Proven Graphite Production

Operation

Premium Pricing:
CAD 2,190/t
avg. realized price (2025)

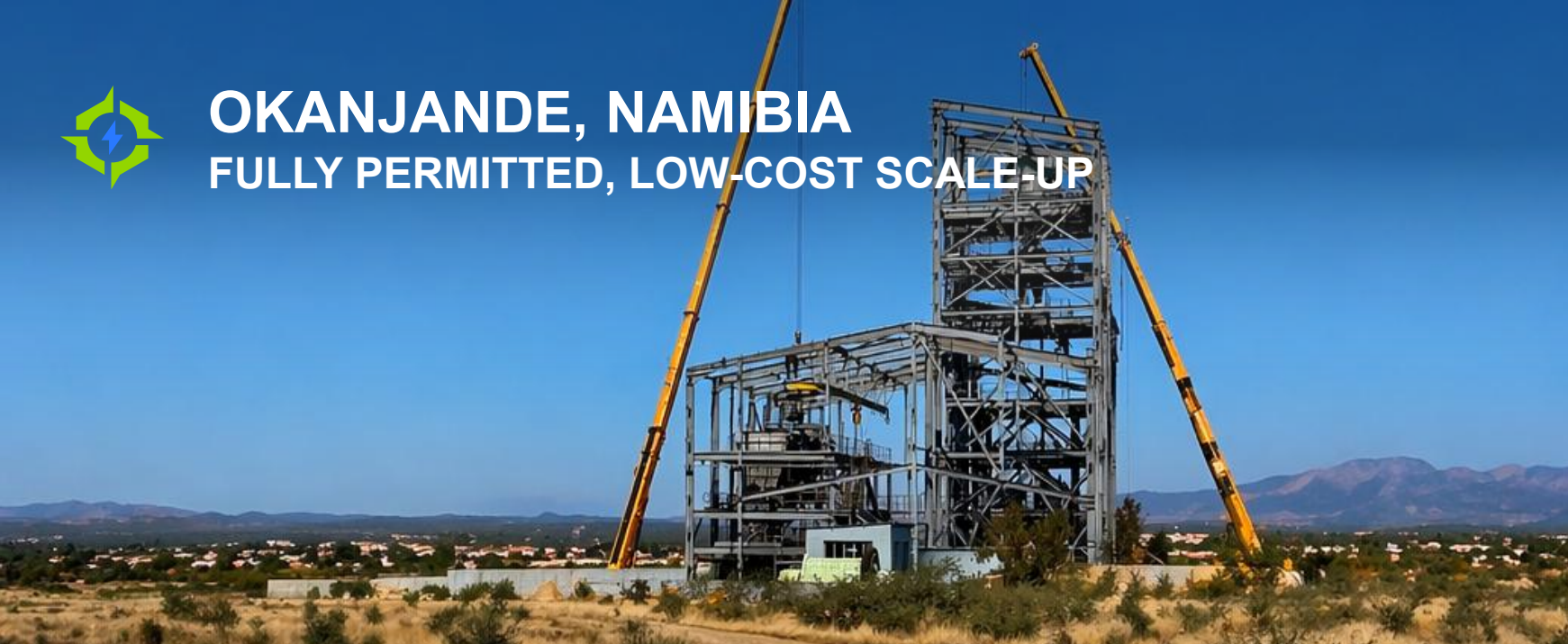
Flake profile enabling access
to **premium**
defense & industrial markets

25 kt Annual nameplate
concentrate capacity
Cg in Measured &
Indicated Resources **213 kt**

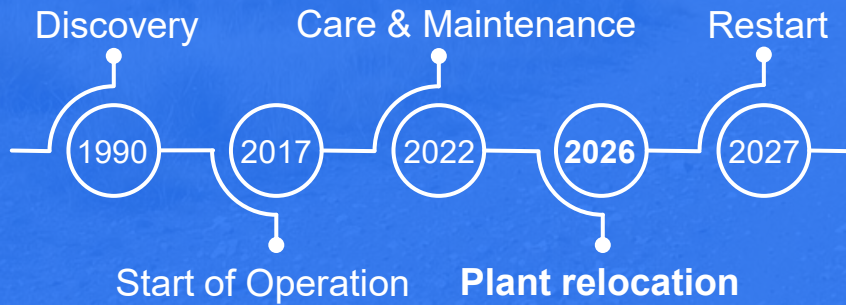


OKANJANDE, NAMIBIA

FULLY PERMITTED, LOW-COST SCALE-UP



Mine History



Status Former producing mine with low-capex **Restart** potential

Location **Stable**, Mining-Friendly
Namibia **Jurisdiction**

Operation

Flake Profile
Optimized for high-value battery markets

Low-cost mining supported by low stripping ratio

31 kt Planned Annual Concentrate Capacity
Cg in Measured & Indicated Resources **1600 kt**



Mine lease NAM



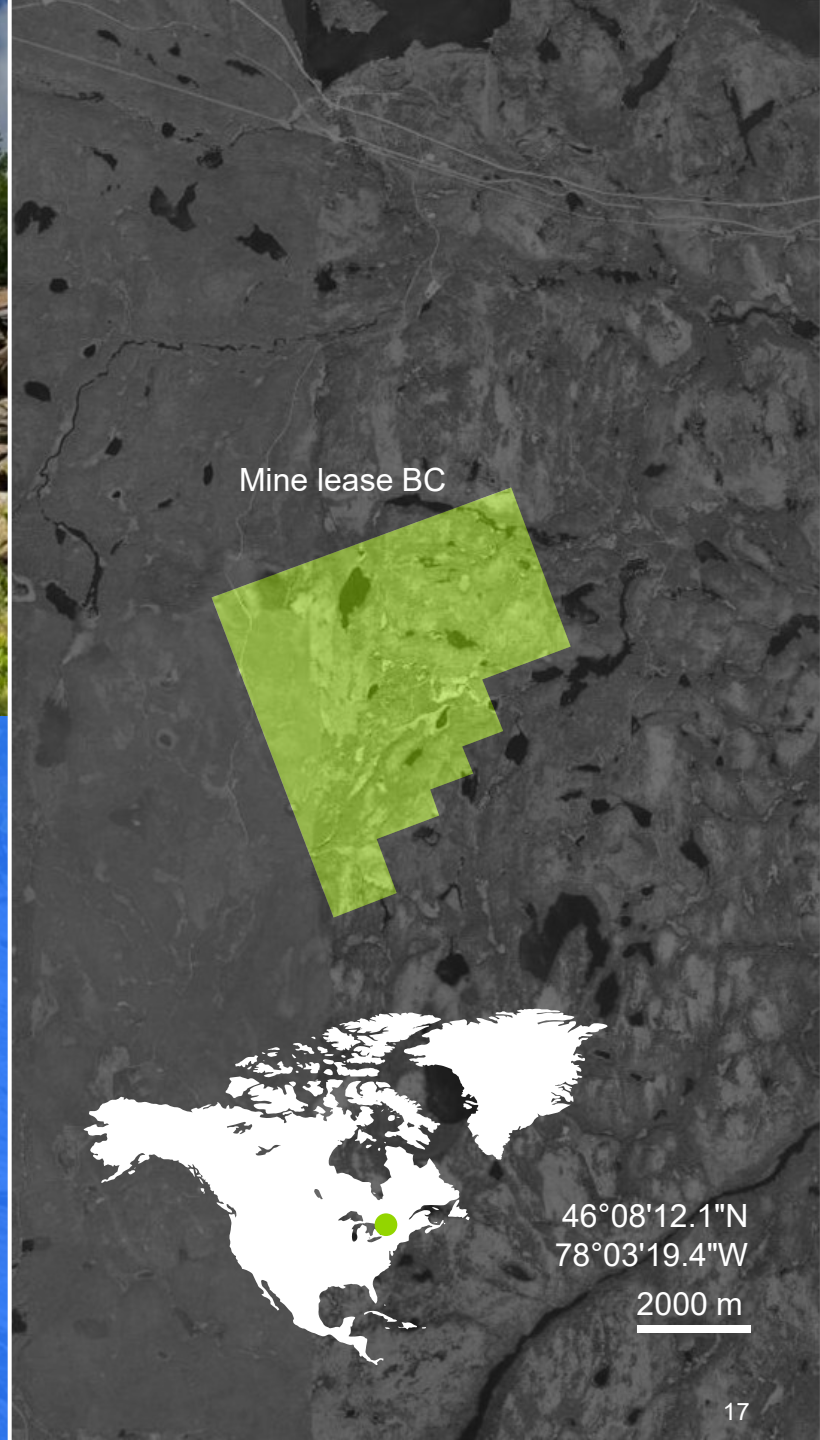
20°35'58.1"S
16°37'23.3"E

1000 m

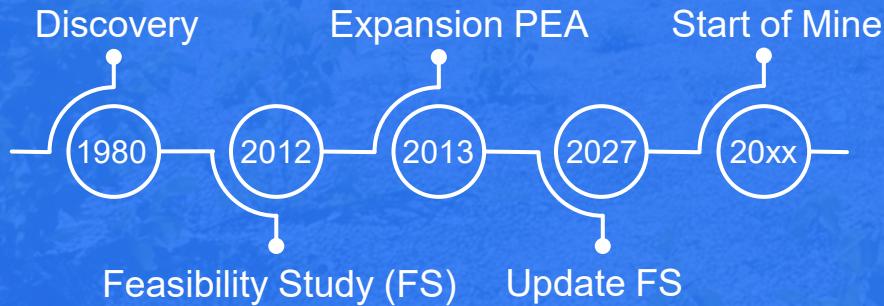


BISSETT CREEK, CANADA

LONGER-TERM NORTH AMERICAN GROWTH LEVER



Mine History



Status

Advanced

Permitting



Our duty



Favorable

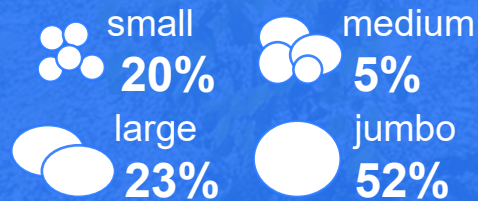
ESG

Profile

Operation

Low-Cost

mining (<1.0 strip ratio)
supporting premium flake
graphite for battery market



44 kt

Planned Annual
Concentrate Capacity

Cg in Measured &
Indicated Resources **1,200 kt**



INNOVATION UNLEASHED ELECTRIFICATION UNDERPINS FUTURE ENERGY SECURITY



Enabling the transition with high-performance Battery Anode Material (BAM) – the largest mineral component in lithium-ion batteries. Our mines and planned BAM facilities are in favorable jurisdictions, reducing supply-chain risk for Europe, North America, and Asia.



GLOBAL BAM PLANT NETWORK

BUILDING A PHASED, MARKET-ALIGNED GLOBAL BAM PLATFORM



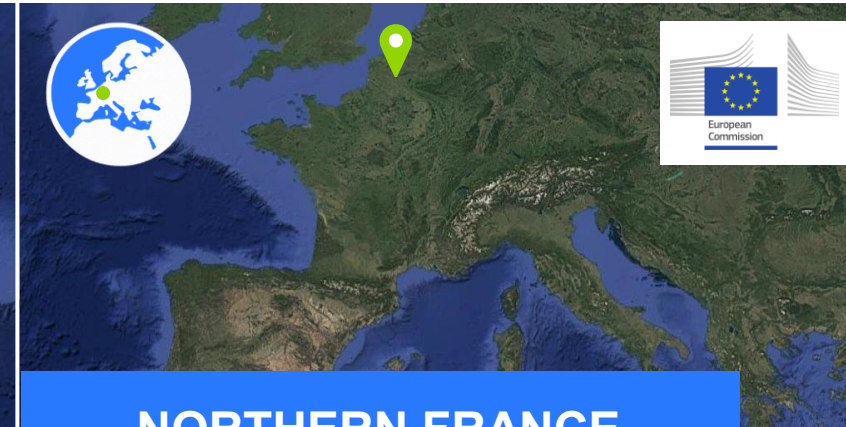
YANBU, KSA

- Cost-competitive BAM project backed by JV Partnership with leading Saudi Arabian industrial partner Obeikan Investment Group and clear path to execution
- First Production of 25,000 tpy BAM in 2028, with expansion potential
- Strategic location to serve Middle East and global markets



BAIE-COMEAU, CANADA

- Cost-effective, modular design in partnership with BMI Group that can scale to market quickly to serve North American demand
- Strategically situated to serve prolific Quebec graphite corridor (marked in grey)
- Supports Canada critical minerals strategy to pair mine production with downstream processing

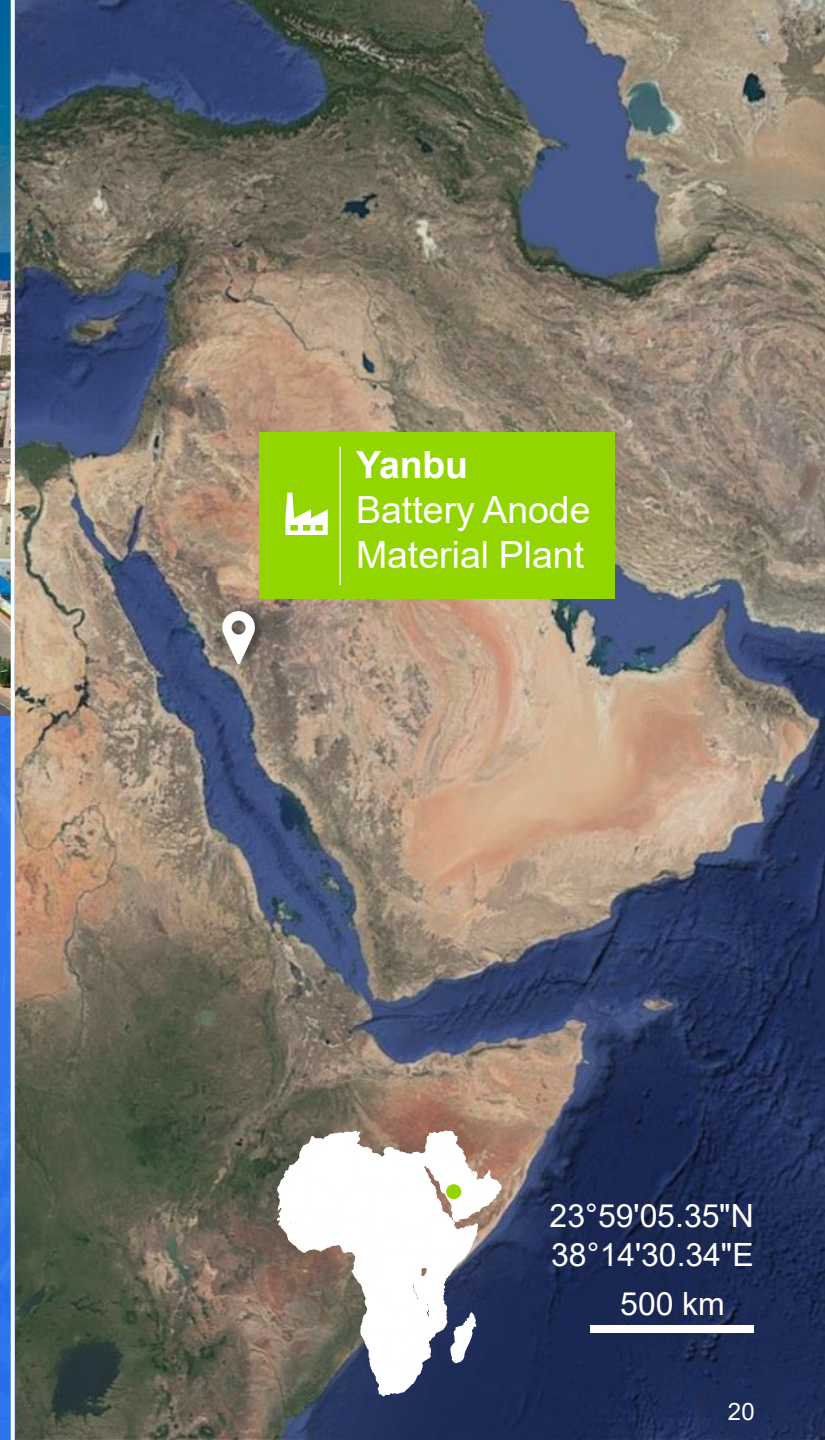



NORTHERN FRANCE

- Permitting & financing facilitated as “Strategic Project” under European Critical Raw Materials Act (CRMA)
- Clear path to production from Namibia (pre-processing) to France (purification and coating), and Germany (battery testing)
- Strategically situated to serve EU critical minerals demand / self-sufficiency

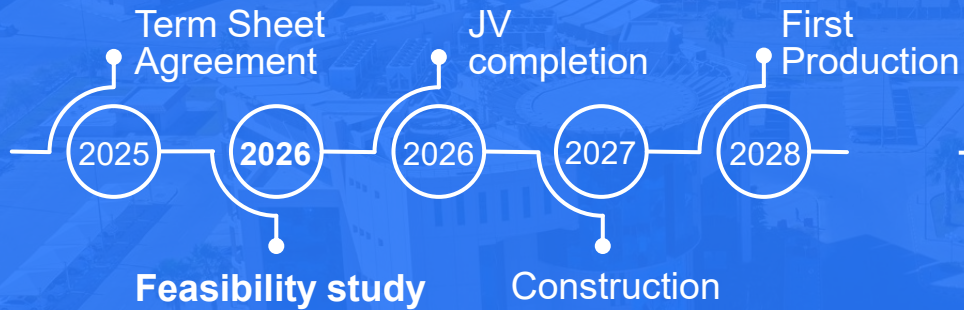


KINGDOM OF SAUDI ARABIA BAM PROJECT PARTNERING IN YANBU WITH THE OBEIKAN GROUP



 **Yanbu**
Battery Anode
Material Plant

Plant Timeline



Market

Positioned to serve
Asia, European & NA markets

Location



Yanbu

Export-oriented hub
on the Red Sea

Land Plot



Brownfield
Site on
Industrial Park

Power

Low cost
Labor, Power &
Utilities



Capacity

Initial **25k tpy**
Capacity with Expansion
Potential



23°59'05.35"N
38°14'30.34"E
500 km

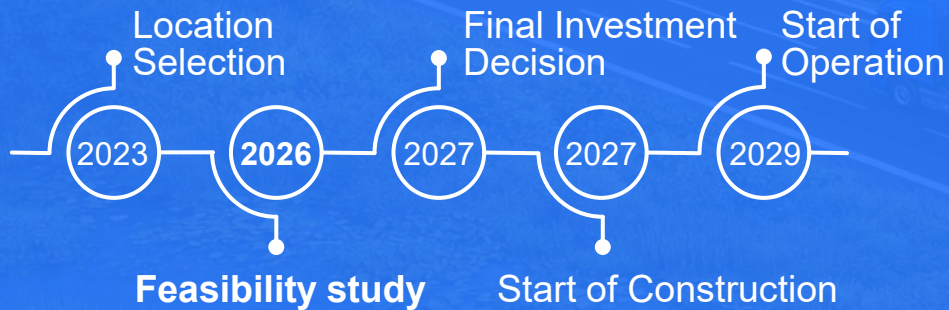


CANADA BAM PROJECT

NORTH AMERICAN BAM GROWTH PLATFORM



Plant Timeline



Status

Awaiting
Power Allocation

Location



Deepwater **Port**
Connecting Canada to the World

Land Plot



1.2M m²
in the Industrial Port Area

Power

5.4 GW
Access to Affordable, Green Hydro Power

Capacity

Phase I **20k tpy**
Capacity with Modular Expansion Potential up to 200k tpy



Baie-Comeau
Battery Anode Material Plant

Lac des Îles & Bissett Creek
Mines

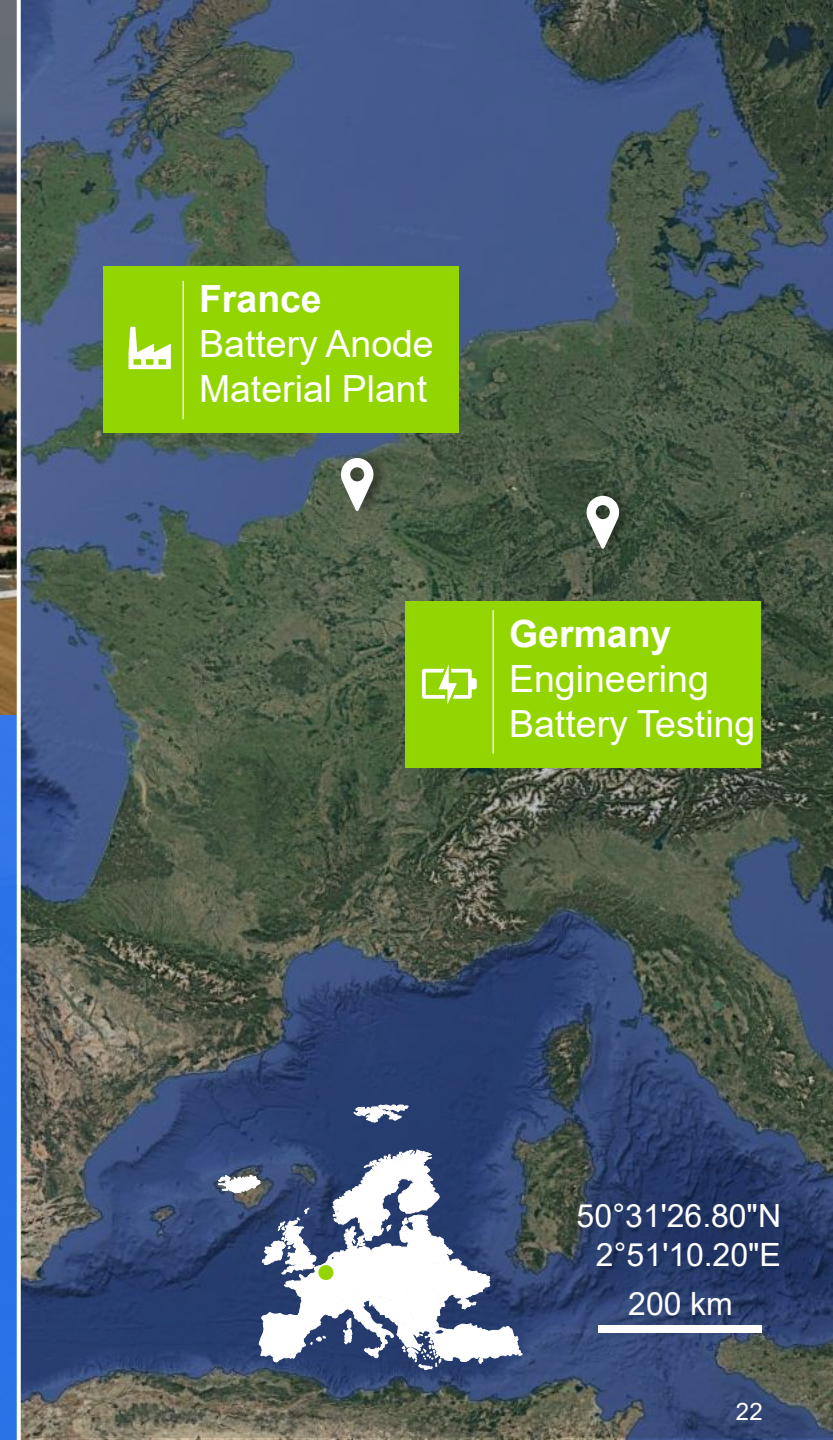
Graphite corridor with graphite deposits

49° 12' 44.9" N
68° 14' 34.8" W
100 km

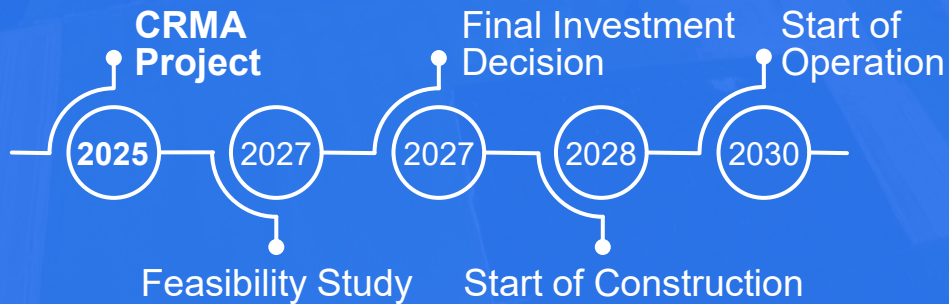


FRANCE BAM PROJECT


"STRATEGIC STATUS" UNDER CRITICAL RAW MATERIALS ACT




Plant Timeline



Market

Strategic Proximity to **EU** Gigafactories 

Location

 Inland **Port**
Train and Heavy Road Connection Available

Land Plot



Brownfield **Site** on Industrial Park

Power

Low CO₂ Power Available 

Capacity

Initial **20k tpy** Capacity with Expansion Potential 



INNOVATION UNLEASHED REDEFINING GRAPHITE



We deliver graphite products that power next-generation batteries.
Our vertically integrated mine-to-market model supplies North American, European and Asian customers –
from industrial graphite today to natural-graphite anode materials tomorrow.



BATTERY DIVISION – KEY CAPABILITIES

INFRASTRUCTURE, EXPERTISE & INNOVATION



LOCATION

440 m² state-of-the-art lab on Heraeus campus near Frankfurt, Germany



TEAM

PhD-level materials and battery scientists with deep domain expertise



ANALYTICS

Comprehensive graphite material characterization linked to battery performance



BATTERY TESTING

In-house coin cell testing for fast performance benchmarking



IP OWNERSHIP

Strong IP portfolio successfully licensed, generating royalty income



FUNDING PROJECTS

USD 900k secured mainly via UPLIFT and USE-G funding projects



OEM VALIDATION

Direct engagement with OEMs and structured qualification processes



INDUSTRIAL SCALE-UP

Direct pathway into BAM plants for industrial-scale production



INTEGRATED GLOBAL PROCESSING FOR BATTERY ANODE MATERIAL

PROCESS AND PRODUCT KNOWLEDGE ARE KEY FOR STRATEGY EXECUTION

MINING DIVISION

 MINE & PROCESSING



NAMIBIA / CANADA



NATURAL
GRAPHITE
FLAKES

USD 1K – 5K PER MT

BATTERY DIVISION

 SPHEROIDIZATION



KSA / NAMIBIA / CANADA



SPHERICAL
PURIFIED
GRAPHITE

USD 2K – 5K PER MT

 PURIFICATION



KSA / EUROPE / CANADA

 COATING



KSA / EUROPE / CANADA



COATED
SPHERICAL
PURIFIED
GRAPHITE

USD 7K – 10K PER MT

 BATTERY TESTING

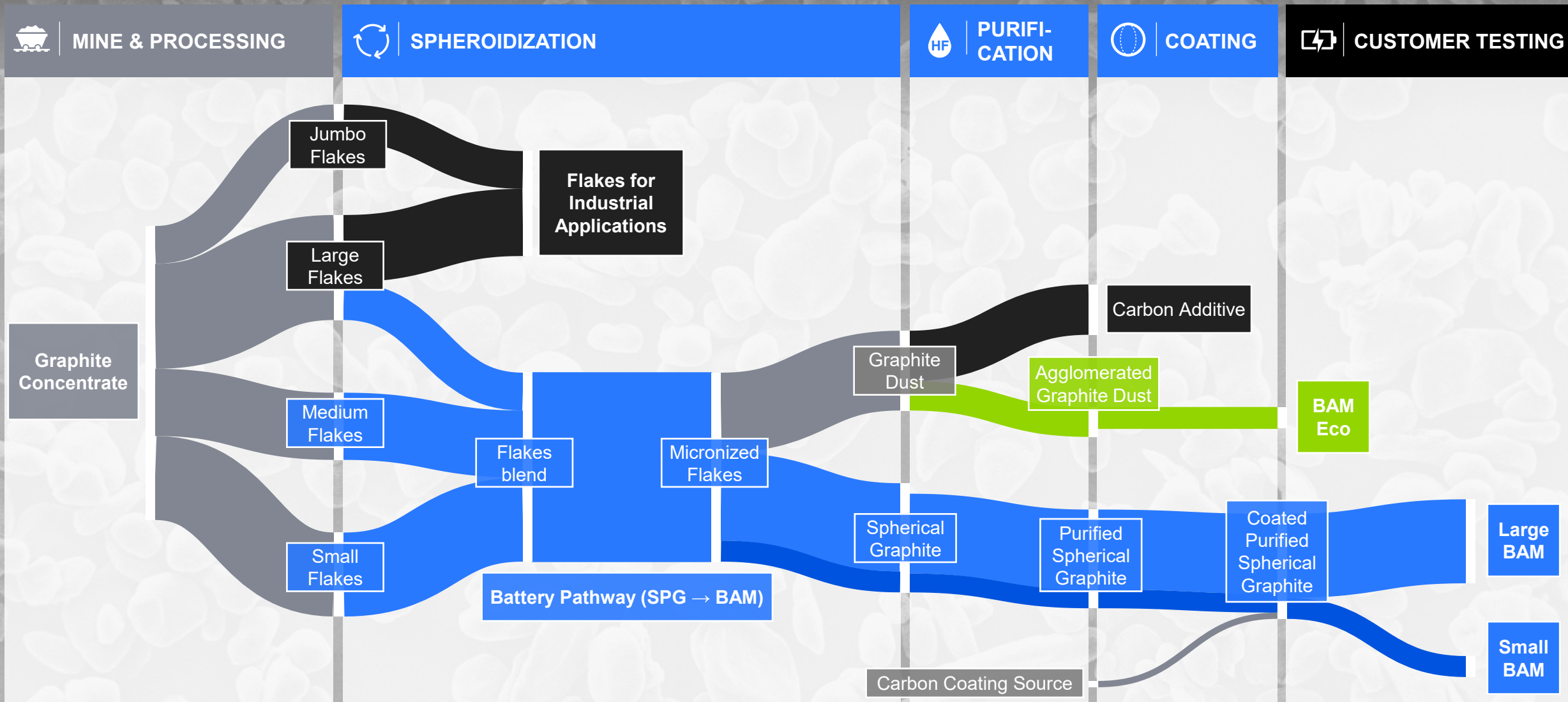


GERMANY



VERTICAL INTEGRATION FROM CONCENTRATE TO BAM

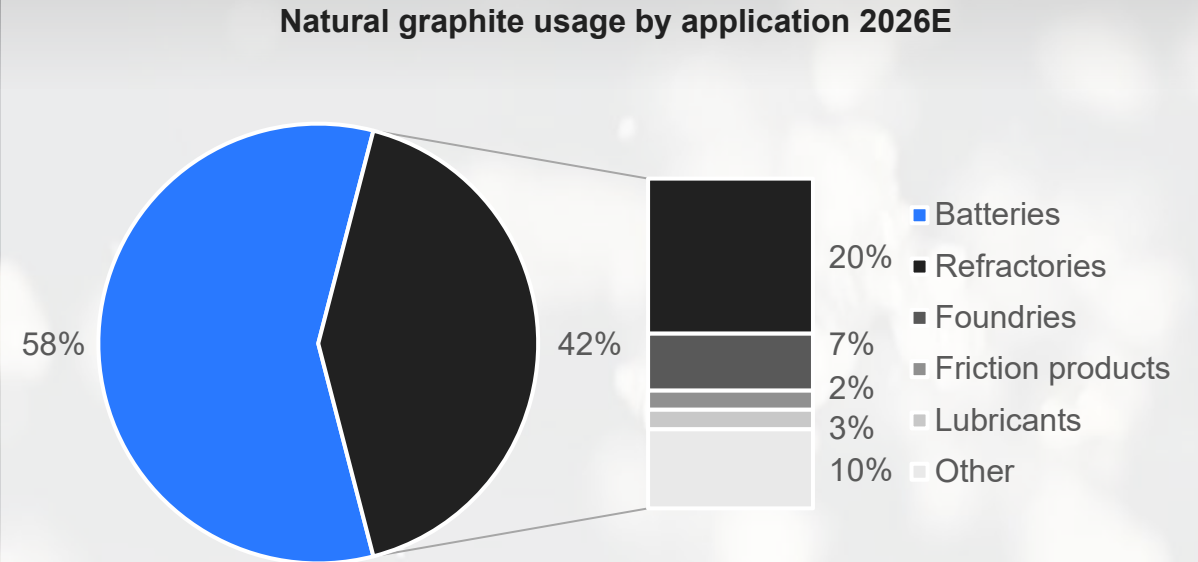
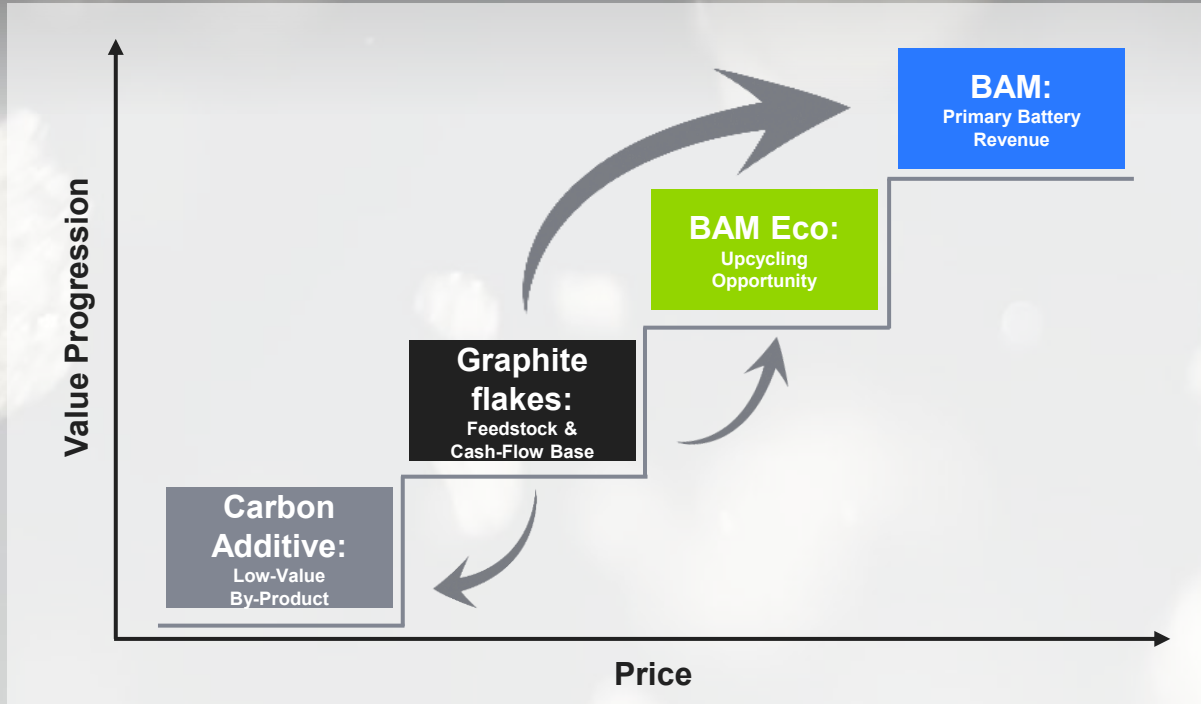
MASS FLOW MODEL FOR 25 KT BAM PROCESSING





MOVING UP THE VALUE CHAIN

SAME FEEDSTOCK, HIGHER MARGINS, DIVERSIFIED RISK



Source: Macquarie Research

- **Basecase Stability:** Industrial flake graphite supports cash flow while feeding higher-value battery products
- **Upside Leverage:** Process by-products are upcycled into BAM Eco, lifting margins and resource efficiency
- **Clear path to execution:** Clear path to BAM production provides revenue capture by 2028

- **Stable industrial base:** Graphite flakes for Industrial applications provide consistent baseline volumes, supporting downside resilience
- **Strong battery-led growth:** Battery applications drive most of the future natural graphite demand, expanding steadily through 2030
- **Balanced market exposure:** A diversified end-market mix combines long-term growth with near-term volume stability



HIGH QUALITY NATURAL FLAKE GRAPHITE

ESTABLISHED CUSTOMER BASE FOR MORE THAN 30 YEARS

 M100 / M150 (SMALL)



Mesh size -100 / -150
Carbon range 94 - 97 %
Surface Area 1.1 m²/g

 80X150 (MEDIUM)



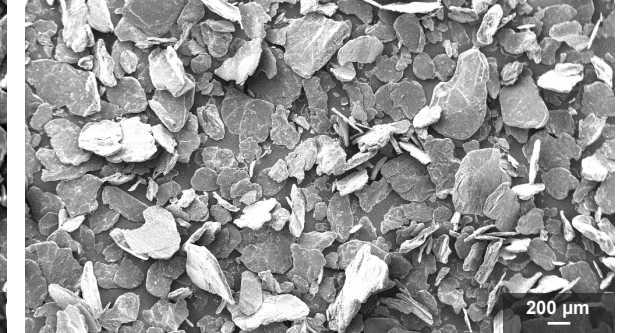
Mesh size -80 +150
Carbon range 94 - 97 %
Surface Area 1.0 m²/g

 50X80 (LARGE)



Mesh size -50 +80
Carbon range 94 - 97 %
Surface Area 1.1 m²/g

 20X50 (JUMBO)

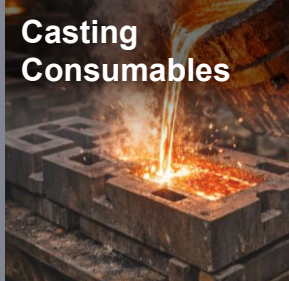


Mesh size -20 +50
Carbon range 94 - 97 %
Surface Area 0.5 m²/g

Steel & Foundry Refractories



Casting Consumables



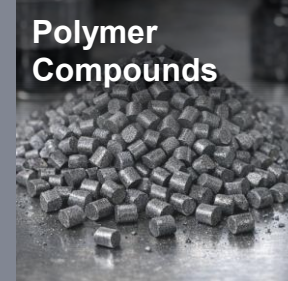
Lubricants & Wear Reduction



Flexible Graphite



Polymer Compounds



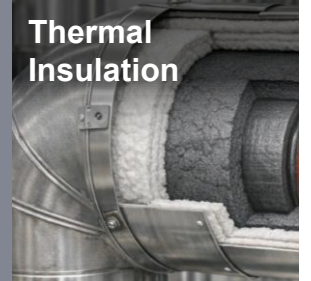
Braking Systems



Thermal Management



Thermal Insulation



METAL & FOUNDRY INDUSTRY

INDUSTRIAL APPLICATIONS

AUTOMOTIVE INDUSTRY

ELECTRONICS & ENERGY INDUSTRY

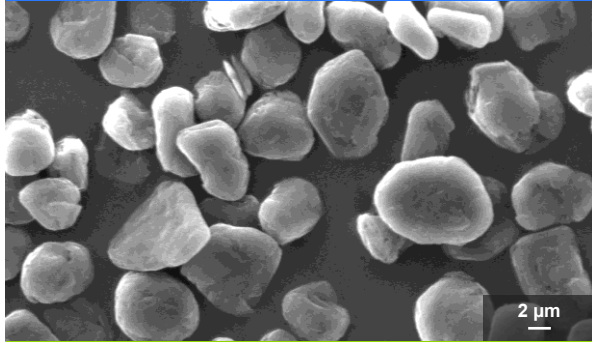


TAILORED BAM FOR GLOBAL BATTERY MARKETS

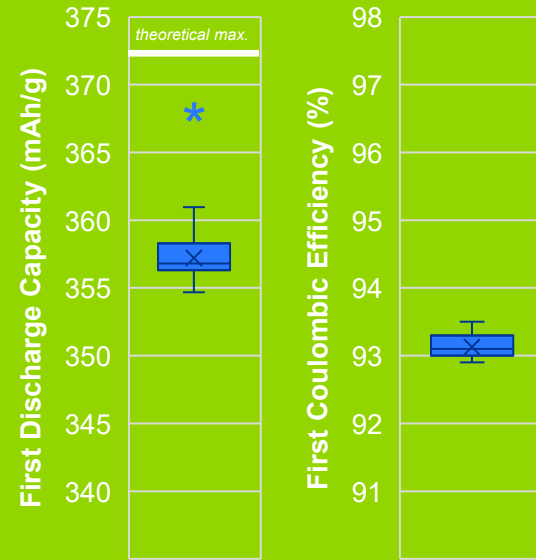
OPTIMIZED BAM PORTFOLIO



BATTERY ANODE MATERIAL - BAM SMALL



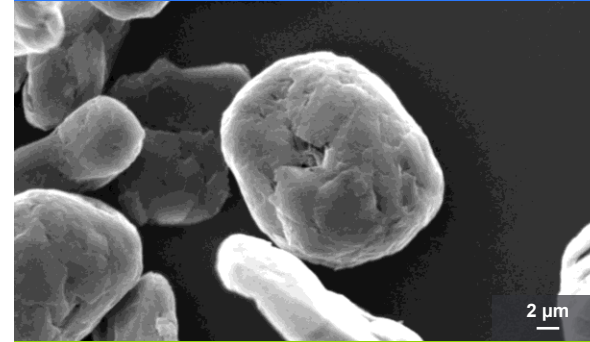
D50	7.0 – 10.0	μm
D99	< 30.0	μm
Surface Area	> 2.5	m ² /g
Tap Density	> 1000	g/L
Ash content	< 0.06	%



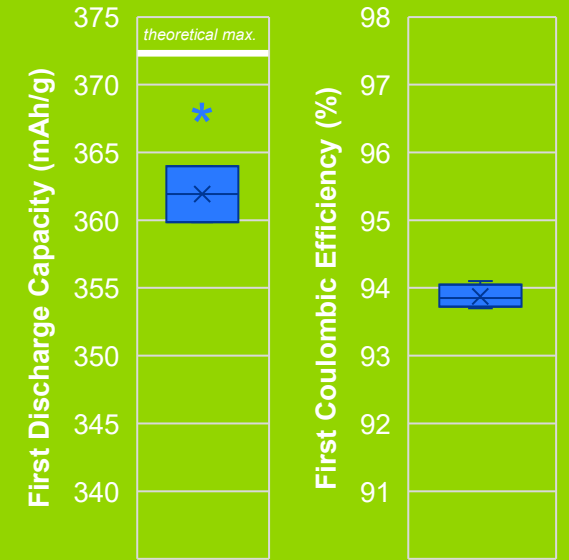
internal (box) and customer (*) data



BATTERY ANODE MATERIAL - BAM LARGE



D50	15.0 – 17.0	μm
D99	< 45.0	μm
Surface Area	> 2.0	m ² /g
Tap Density	> 1000	g/L
Ash content	< 0.06	%



internal (box) and customer (*) data

BEV, HEV, PHEV



Drones, eVTOL



Robotics



BESS





NORTHERN GRAPHITE

OUR VALUE PROPOSITION



As North America's only operating natural graphite producer, we deliver secure, Ethically-sourced graphite from transparent OECD-aligned supply chains, today, while building a vertically integrated platform for battery materials tomorrow. Our products support critical industries and the growing battery and storage markets – with supply chain security, transparency, and long-term value creation at the core.



WORKING TOGETHER NOW TO ENABLE A GREENER TOMORROW

OUR VALUES

CARE

Our people, Our communities,
Our customers, Our world.

We are not doing this alone,
we are part of the solution.

COLLABORATE

CREATE

The change starts now, we are not waiting but
improving every day, for us and for our children.

We are more than just the energy transition;
we supply products that help the world decarbonize.

COMMIT





OUR COMMITMENT

REDEFINING GRAPHITE WITH UNIQUE & AMBITIOUS ESG GOALS



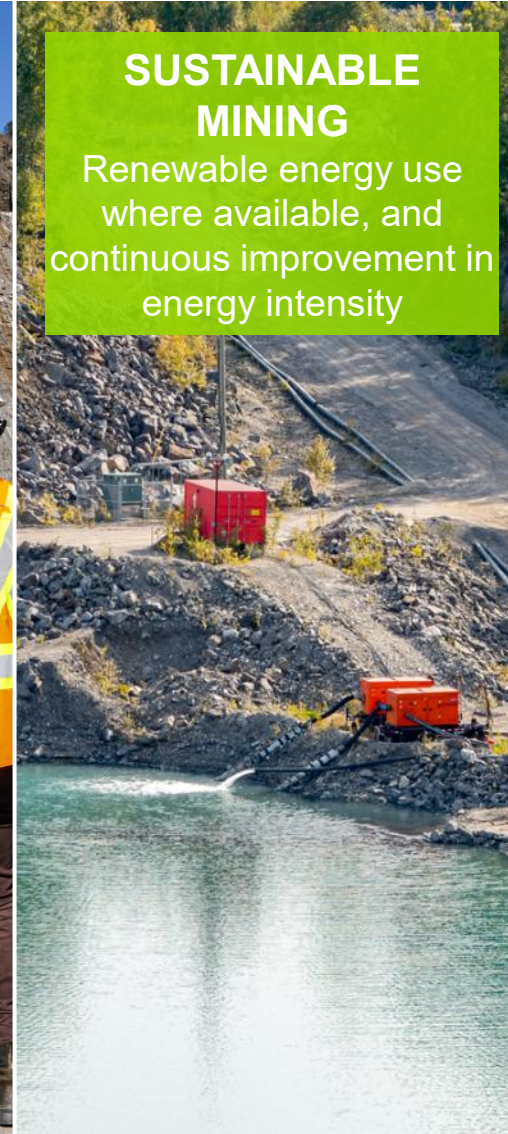
INCLUSION, EQUITY & DIVERSITY
Empowering diversity – an inclusive workplace for all



PARTNERING LOCALLY
Building long-term partnerships with local communities and First Nations



HEALTH & SAFETY
Safety first – everywhere, always, for everyone



SUSTAINABLE MINING
Renewable energy use where available, and continuous improvement in energy intensity



DECARBONIZING
A greener future – low-emission production through renewable energy



EXPERIENCED LEADERSHIP

GLOBAL MINING & INDUSTRY EXPERTISE

Northern Graphite Executives



Hugues Jacquemin
CEO 30+ yrs leadership in graphite and lithium-ion battery materials. Visionary in driving carbon material innovations and company growth.



Niall Moore
CFO 35+ years financial management, reporting & governance at large mining companies. CPA with deep industry knowledge.



Maximilian Meier
COO Leads global industrial operations & manufacturing scale-up. Formerly of Evonik & Siemens. Execution-driven leader from pilot to commercial scale.



Dr. Moritz Hantel
CPO Leads product strategy and tech development for BAM. PhD in Electrochemistry with strong technical and commercial focus.



Michael Grimm
CCO & President of NGC BM
 15+ yrs leading global teams in the field of market development for next generation battery chemistries across Europe, America and Asia.

Board of Directors



Greg Bowes, QP
Chairman Co-Founder Northern Graphite, P. Geo with 40+ yrs experience in mining, engineering, capital markets & Strategic oversight.



Cam Birge
Director Founder, former CEO of Industrial Minerals, now Northern Graphite. 30+ yrs in Strategy Corporate & Organizational Development, Scaling & M&A.



Samantha Espley
Independent Non-Exec Director
 30+ years in mining, engineering and industry governance. Former President, Canadian Institute of Mining.



Frank O'Brien Bernini
Independent Non-Exec Director
 38+ years in sustainability & R&D. Former CSO, Owens Corning. ESG leadership & innovation governance.



Hugues Jacquemin
Director 30+ yrs leadership in graphite and lithium-ion battery materials. Visionary in driving carbon material innovations and company growth.

Partners





NEAR-TERM EXECUTION CATALYSTS

ADVANCING OPERATIONS, FEEDSTOCK AND BAM DEVELOPMENT

EXPANDING PRODUCTION

LAC DES ILES PIT EXTENSION

NEAR-TERM

- Government Financing for pit – Q3 2025
- Online Auctions Launch for expanded sales reach
- Pit reopening targeted for H2 2026

FEEDSTOCK EXPANSION

OKANJANDE MINE RESTART

WITHIN NEXT 18 MONTHS

- Plant relocation targeted for H1 2026
- Advance and secure project financing
- Reconstruction of processing plant on mining site
- Mine Restart - late 2027 / early 2028
- Ore & concentrate stockpiling for BAM platform
- Begin supplying Saudi BAM Facility

BAM PLATFORM

SAUDI ARABIA BAM FACILITY

WITHIN NEXT 30 MONTHS

- Final feasibility study
- Secure full project financing, including SIDF and third-party funding
- Final investment decision & JV formation
- Off-take agreement
- Start of plant construction
- Commissioning of BAM production
- Ramp-up to 25,000 tpy BAM

COORDINATED EXECUTION PATHWAYS, FROM MINE PRODUCTION TO BAM COMMERCIALIZATION



CAPITAL STRUCTURE

FOCUSED ON CASH MANAGEMENT

PUBLIC LISTINGS

EXCHANGE NAME	NORTHERN'S TICKER
Canadian Stock Exchange (TSX-V)	NGC
OTCQB Venture Market (OTCQB)	NGPHF
Frankfurt Stock Exchange (FRA)	ONG
Börse Stuttgart (XSTU)	ONG

CAPITAL STRUCTURE (AS AT JUNE 01, 2026)

Basic Shares Outstanding ⁽¹⁾	166,013,668
Options & Restricted Share Units	22,028,500
Fully-diluted	188,042,168
Basic Market Cap	C\$28.2M

(1) includes 5,598,340 Shares held by Insiders

PEER COMPARISON (JUNE 2025 TO MAY 2026)



Source: <https://stockquote.io/>



EXECUTION UNLEASHED

DE-RISKING THE GLOBAL ENERGY TRANSITION – THROUGH SECURE GRAPHITE SUPPLY



SECURE GRAPHITE SUPPLY

- Secure G7 Supply aligned with OECD standards
- A trusted non-China alternative for global battery & industrial markets
- Positioned to support EV/BESS growth across Americas, Europe & Asia

FIRST MOVER ADVANTAGE

- Only commercial natural graphite producer in North America and G7
- Established customer relationships with advanced qualification pathways
- Active engagement with battery makers, partners, and governments

SCALE-UP PATHWAY

- Fully integrated mine-to-anode material platform
- Modular BAM solutions enabling regional partnerships and localization
- Partner-driven execution model reduces capital, ramp-up, & market risk



MULTIPLE CATALYSTS FOR NEAR-TERM VALUE CREATION

NEW PRODUCTION, FEEDSTOCK GROWTH AND BATTERY MATERIALS DEVELOPMENT



CASH FLOW

Immediate exposure to producing graphite assets and stable industrial markets



NEAR-TERM GROWTH

Capital-efficient growth through brownfield expansions and mine restarts



BAM PLATFORM

Leveraging high-margin battery materials growth via planned global BAM platform



PARTNERSHIPS

Development pathways supported by project- and platform-level partnerships



INTERESTED IN PARTNERING OR INVESTING?
CONTACT US TO EXPLORE OPPORTUNITIES

PAV JORDAN

VP Communications – Investor Relations & Partnerships





GLOSSARY

ABBREVIATIONS & DEFINITIONS

Abbreviation	Explanation
BAM	Battery Anode Material synonym for Anode Active Material (AAM)
BEV	Battery Electric Vehicle
BESS	Battery Energy Storage System
BFS	Bankable Feasibility Study
CAD	Canadian Dollar
CAGR	Compound Annual Growth Rate
Cg	Graphitic carbon content
CO ₂	Carbon dioxide
CRMA	Critical Raw Materials Act
CSPG	Coated Spherical Purified Graphite
D50	Median particle diameter, by volume
D99	99% of particles (by volume) have a smaller particle diameter
ESG	Environmental, Social, and Governance
EV	Electric Vehicle
eVTOL	Electric Vertical Take-Off and Landing aircraft
FID	Final Investment Decision
FRA	Frankfurt Stock Exchange
FS	Feasibility Study
G7	Group of Seven major industrialized economies
HEV	Hybrid Electric Vehicle
HF	Hydrofluoric Acid used for graphite purification
ICE	Initial Coulombic Efficiency, quality marker of batteries

Abbreviation	Explanation
IP	Intellectual Property, e.g. patents
JV	Joint Venture
KSA	Kingdom of Saudi Arabia
kt	Kiloton, 1,000 Metric Tons or 1,000,000 kg
LDI	Lac des Iles
Li-ion	Lithium-ion
M&I	Measured & Indicated linked to ore deposit exploration
MT / Mt	Million tons, 1,000,000 metric tons
NGC	Northern Graphite Corporation
OEM	Original Equipment Manufacturer
OECD	Organization for Economic Co-operation & Development
OKJ	Okanjande, Namibia
OTCQB	OTCQB Venture Market
PEA	Preliminary Economic Assessment
PHEV	Plug-in Hybrid Electric Vehicle
RSU	Restricted Share Unit
SIDF	Saudi Industrial Development Fund
SPG	Spherical Purified Graphite
tpy	Tons per year
TSXV	Canadian Stock Exchange
USD	United States Dollar
xEV	Electrified vehicle category (BEV, HEV, PHEV)



INNOVATION UNLEASHED

ADVANCING MINING • POWERING BATTERIES • REDEFINING CARBON

TSXV: NGC | OTCQB: NGPHF | FRA & XSTU: 0NG

INFO@NORTHERNGRAPHITE.COM +1 613 271 2124

NORTHERNGRAPHITE.COM

