



NORTHERN GRAPHITE

INNOVATION UNLEASHED

ADVANCING MINING • POWERING BATTERIES • REDEFINING CARBON

TSXV: NGC | OTC: NGPHF | FRA & XSTU: 0NG



FORWARD LOOKING STATEMENTS

This presentation may contain forward-looking information and forward-looking statements (collectively, “forward-looking statements”) which relate to future events or future performance and reflect management’s expectations and assumptions regarding Northern Graphite Corporation’s (the “Company” or “NGC”) growth, results, performance and business prospects and opportunities. Such forward-looking statements may include, but are not limited to, statements with respect to: the expansion potential of the Lac des Iles mine, the reactivation and expansion potential of the Okanjande mine, the development of the Bissett Creek project and the Company’s plans to develop a Battery Anode Material facility; the timelines and costs related to the various plans described in this presentation and their expected results; targets, estimates and assumptions in respect of production and prices; amount and type of future capital expenditures and capital resources; mineral reserves and mineral resources; anticipated grades; recovery rates; future financial or operating performance; costs and timing of the development of new deposits; production decisions; timing of the receipt of governmental approvals and/or acceptances; costs and timing of construction of mines and facilities; operating expenditures; and costs and timing of future exploration and environmental and reclamation expenses.

Often, but not always, forward-looking statements can be identified by the use of words such as “plans”, “expects”, “is expected”, “budget”, “scheduled”, “estimates”, “forecasts”, “intends”, “anticipates”, or “believes” or variations (including negative variations) of such words and phrases, or state that certain actions, events or results “may”, “could”, “would”, “might” or “will” be taken, occur or be achieved.

Forward-looking statements involve known and unknown risks, uncertainties and other factors which may cause the actual results, performance or achievements of the Company and/or its subsidiaries and/or its affiliated companies to be materially different from any future results, performance or achievements expressed or implied by the forward-looking statements. There can be no assurance that future required regulatory approvals will be obtained or that anticipated transactions or proposed work and construction programmes will be completed satisfactorily.

Such forward-looking statements reflect management’s current beliefs and are based on information currently available to it. Although the Company has attempted to identify important factors that could cause actual actions, events or results to differ materially from those described in forward-looking statements, there may be other factors that cause actions, events or results to differ from those anticipated, estimated or intended.

There can be no assurance that forward-looking statements will prove to be accurate, as actual results and future events could differ materially from those anticipated in such statements. Accordingly, readers should not place undue reliance on forward-looking statements due to the inherent uncertainty therein.

Forward-looking statements contained herein are made as of the date of this presentation and the Company disclaims any obligation to update any forward-looking statements, whether as a result of new information, future events or results or otherwise except as may be required by applicable securities laws.

Unless indicated otherwise, all dollar figures are in US dollars.

Gregory Bowes, P.Geo., a director of the Company, is the Qualified Person responsible for the technical content in this presentation.

This presentation shall not constitute an offer to sell or the solicitation of an offer to buy nor shall there be any sale of the Company’s securities in any jurisdiction except in accordance with applicable securities laws.



CAUTIONARY NOTE TO UNITED STATES INVESTORS

REGARDING MINERAL RESOURCES

Disclosure regarding mineral resource and mineral reserve estimates included in this presentation were prepared in accordance with National instrument 43-101 - *Standards of Disclosure for Mineral Projects* (“NI 43-101”). This presentation uses the terms “mineral resources”, “measured resources”, “indicated resources” and “inferred resources”, as each of these terms is defined in accordance with the CIM Definition Standards on Mineral Resources and Reserves adopted by the Canadian Institute of Mining, Metallurgy and Petroleum Council (the “CIM Definition Standards”), as required by NI 43-101. Unless otherwise indicated, all resource estimates contained in this presentation have been prepared in accordance with the CIM Definition Standards, as required by NI 43-101.

NI 43-101 is a rule developed by the Canadian Securities Administrators that establishes standards for all public disclosure an issuer makes of scientific and technical information concerning mineral projects. NI 43-101 differs significantly from the disclosure requirements of the U.S. Securities and Exchange Commission (the “SEC”) generally applicable to U.S. companies. For example, the definitions of the terms “mineral resources”, “measured resources”, “indicated resources” and “inferred resources” defined in NI 43-101 and the CIM Definition Standards differ from the definitions in the disclosure requirements promulgated by the SEC. Accordingly, information contained in this presentation will not be comparable to similar information made public by U.S. companies reporting pursuant to SEC disclosure requirements.

United States investors are cautioned not to assume that all or any part of measured or indicated resources will ever be converted into reserves. Inferred resources are in addition to measured and indicated resources. Further, inferred resources have a great amount of uncertainty as to their existence and as to whether they can be mined-economically. It cannot be assumed that all or any part of any inferred resources will ever be upgraded to a higher category.



NORTHERN GRAPHITE

A MADE IN CANADA CRITICAL MINERALS SOLUTION



North America's Only Natural Graphite Producer



Seeking to be a fully integrated **Mine-to-Battery** producer of graphite Battery Anode Material (BAM)



PRODUCING NOW, MITIGATING RISK

Delivering immediate production, managing long-term operational risks.



REVENUE NOW, ENDURING GROWTH

Generating revenue while building for sustained growth.



SEAMLESS MINE-TO-MARKET JOURNEY

Streamlined process from Mine-to-Market.



AHEAD OF THE CURVE

Staying ahead with innovation and planning.



FROM MINE TO BATTERY ANODE MATERIALS

A FULLY-INTEGRATED GLOBAL PLAYER




 Mine
Lac-des-Iles, Canada



 Mine Project
Bissett Creek, Canada



 BAM Plant Project
Baie-Comeau, Canada




 Sales offices




 Laboratory
Frankfurt, Germany



 BAM Plant Project
TBA, France



 Mine (Maintenance)
Okanjande, Namibia



WHY PARTNER WITH US?

FIRST MOVER ADVANTAGE IN MEETING THE WEST'S GROWING GRAPHITE NEEDS



CRITICAL RAW MATERIAL SUPPLY

- North America's only graphite producer
- Proven battery-grade graphite from all our mines and projects
- Secure and scalable supply across multiple mining projects
- Positioned to power the energy transition and supply sovereignty



MINE-TO-MARKET

- Secure, diversified natural graphite sourcing from Namibia and Canada
- We control the full value chain - from mine to material
- Access to state-of-art technology, with a proven process and a clear roadmap to production



TRUSTED PARTNERSHIP

- Decades of world class experience in mining and battery material solutions
- Deep customer base and strong relationships with top-tier battery and EV players
- ESG-driven, investor-ready, and built for long-term value



GLOBAL ELECTRIFICATION

DRIVING THE ENERGY TRANSITION



By 2030*, **renewable energy power** is expected to increase by **5,500 GW**



An additional **1,500 GW** of **storage power** is expected to be implemented by 2030*



Annual **xEV sales** are expected to rise to **41M units** by 2030*



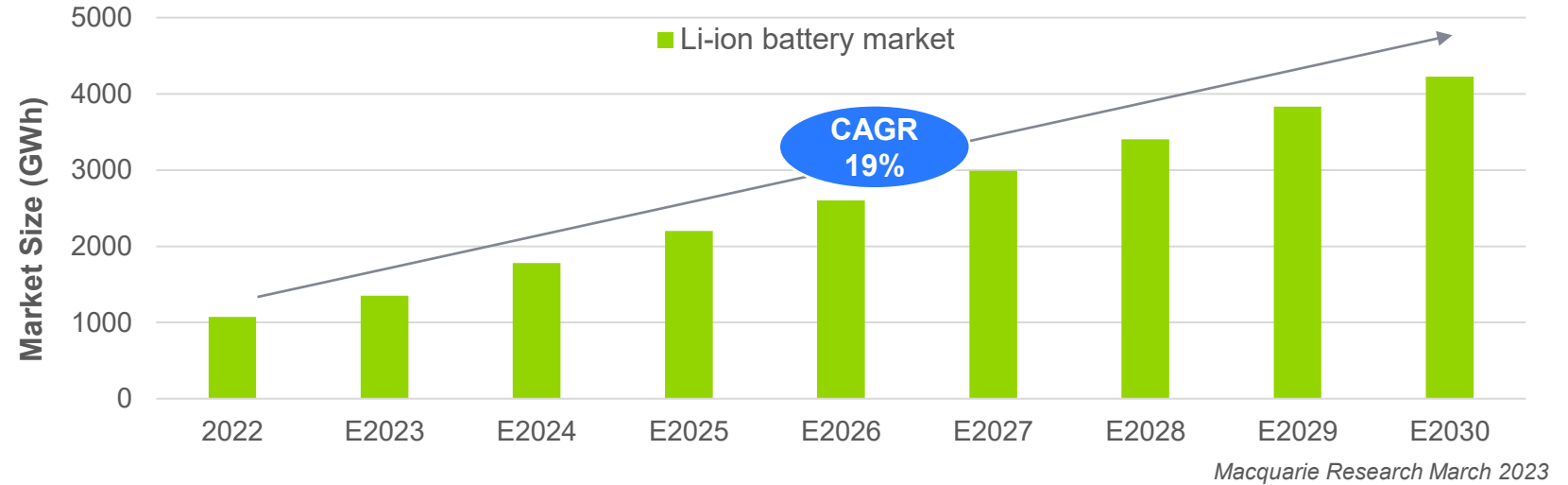


E-MOBILITY

DRIVING BATTERY MARKET GROWTH



Graphite is the largest mineral component in LIBs, with up to **58 kg** per **65 kWh** EV battery system



Break down of battery minerals



NMC811
Graphite

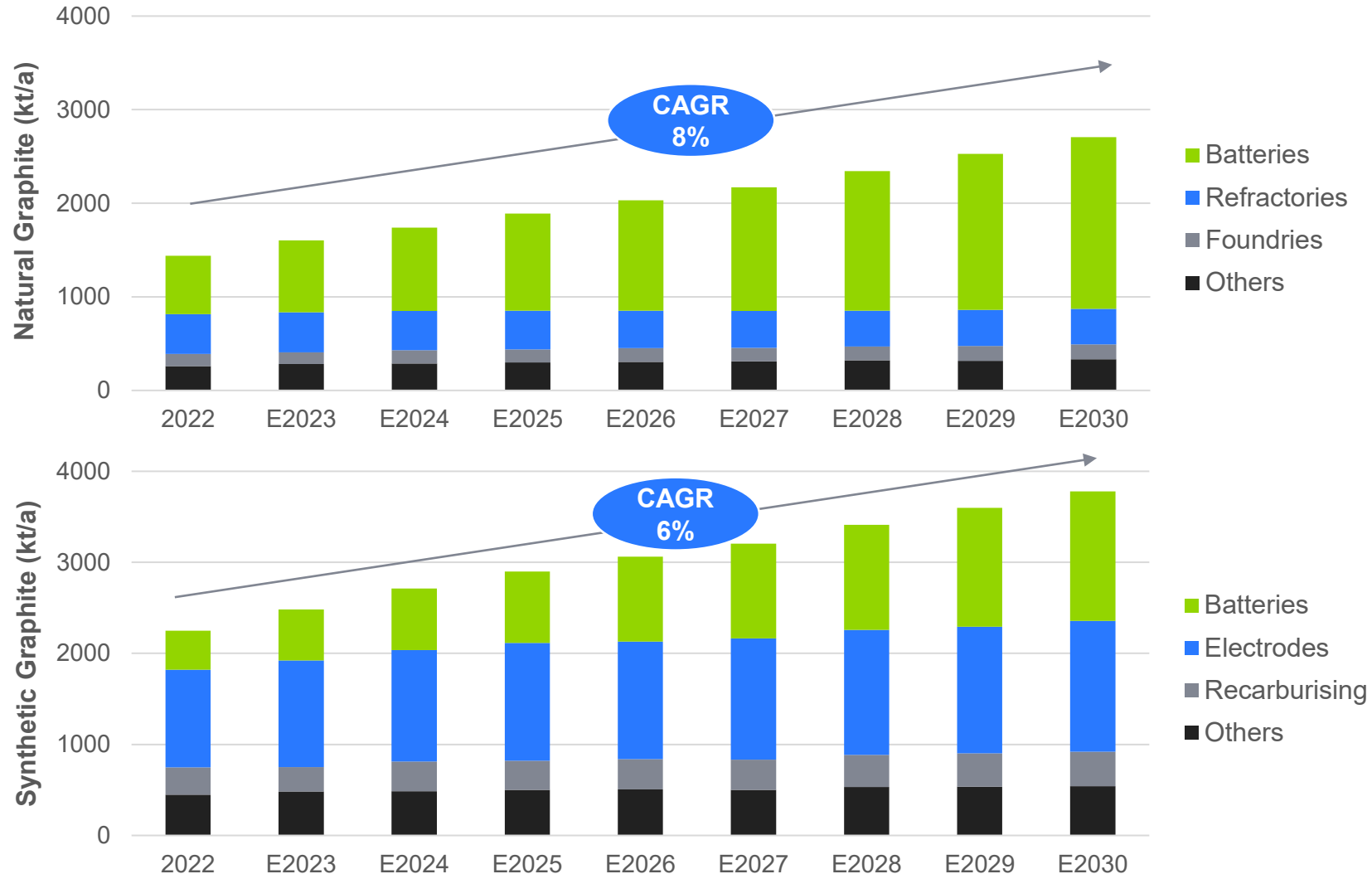
	Mineral	Mass per kWh (kg)	Mass per car (kg)
Cathode	Nickel (Ni)	0.65	42
	Manganese (Mn)	0.08	5
	Cobalt (Co)	0.08	5
	Lithium (Li)	0.10	6
	Carbon additives (C)	0.03	2
Anode	Aluminum (Al)	0.36	24
	Graphite (C)	0.90	58
	Carbon additives (C)	0.01	1
	Copper (Cu)	0.70	46

Resource break-down example of 65 kWh EV assuming NMC811 chemistry

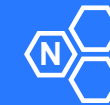


GLOBAL GRAPHITE MARKET

EXPECTED TO REACH MORE THAN 6M TONS PER YEAR



Macquarie Research March 2023



Natural Graphite Market

Natural graphite demand is set to double by 2030, fueled by battery growth and industrial uses.



Synthetic Graphite Market

Synthetic graphite demand growth will slow as more natural graphite is used in battery chemistries.



GLOBAL GEOPOLITICS: SITUATION CRITICAL

DIVERSIFICATION KEY TO SUPPLY CHAIN RESILIENCE

China Dominance

80% of natural graphite concentrate
99% of spherical purified graphite (SPG)
97% of natural graphite BAM in 2023



Trade Barriers
Significant risks to
global graphite supply



Global alarm as China's critical mineral export curbs take hold

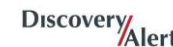
By Jarrett Renshaw, Ernest Scheyder and Jeff Mason

June 4, 2025 5:21 AM GMT+2 · Updated a day ago



The Graphite Supply War: How Global Shortages Threaten Industries

BY JOHN ZADEH ON APRIL 1, 2025



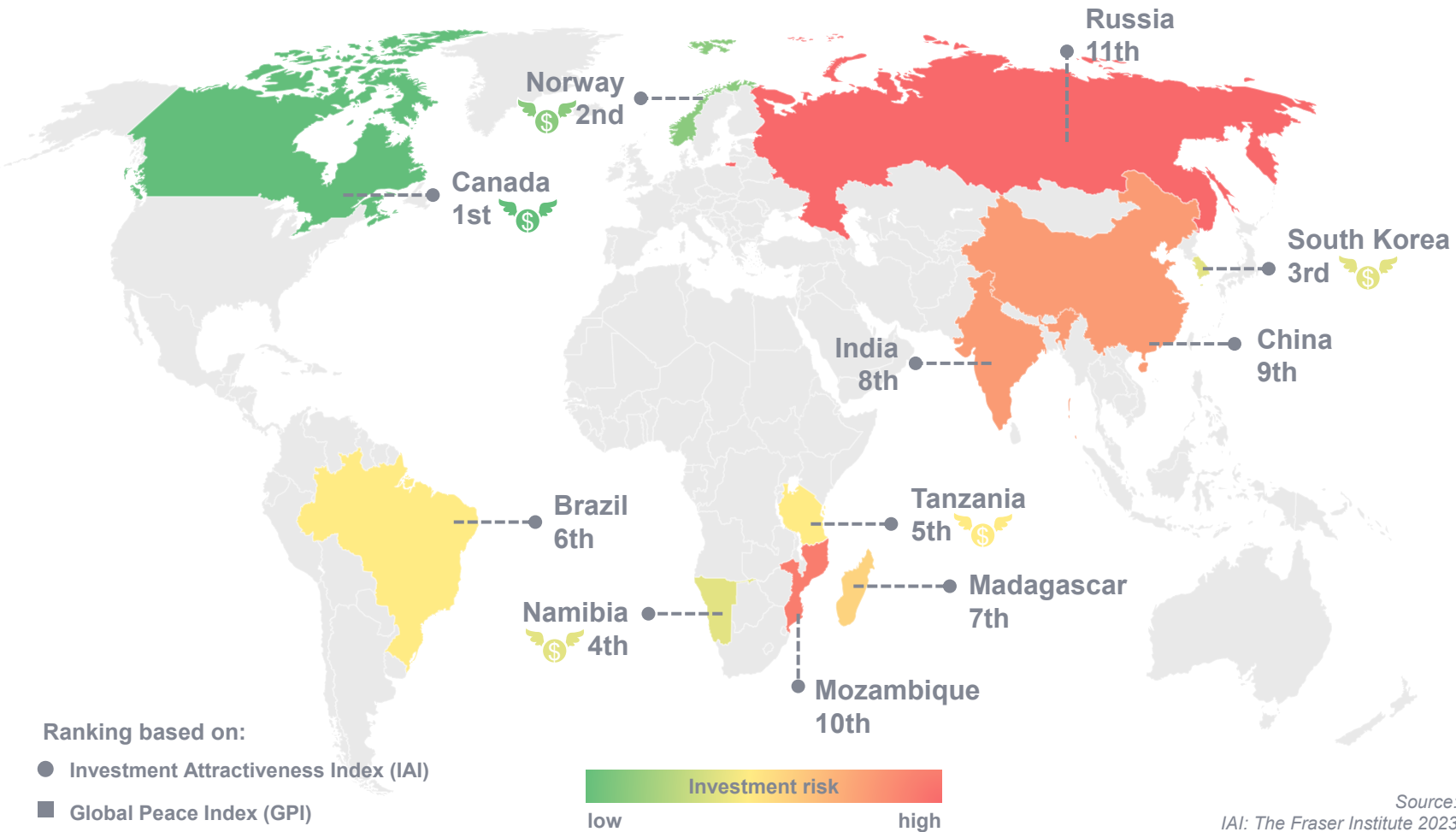
Supply Chain Vulnerability
Exposure to shipping,
operational disruptions



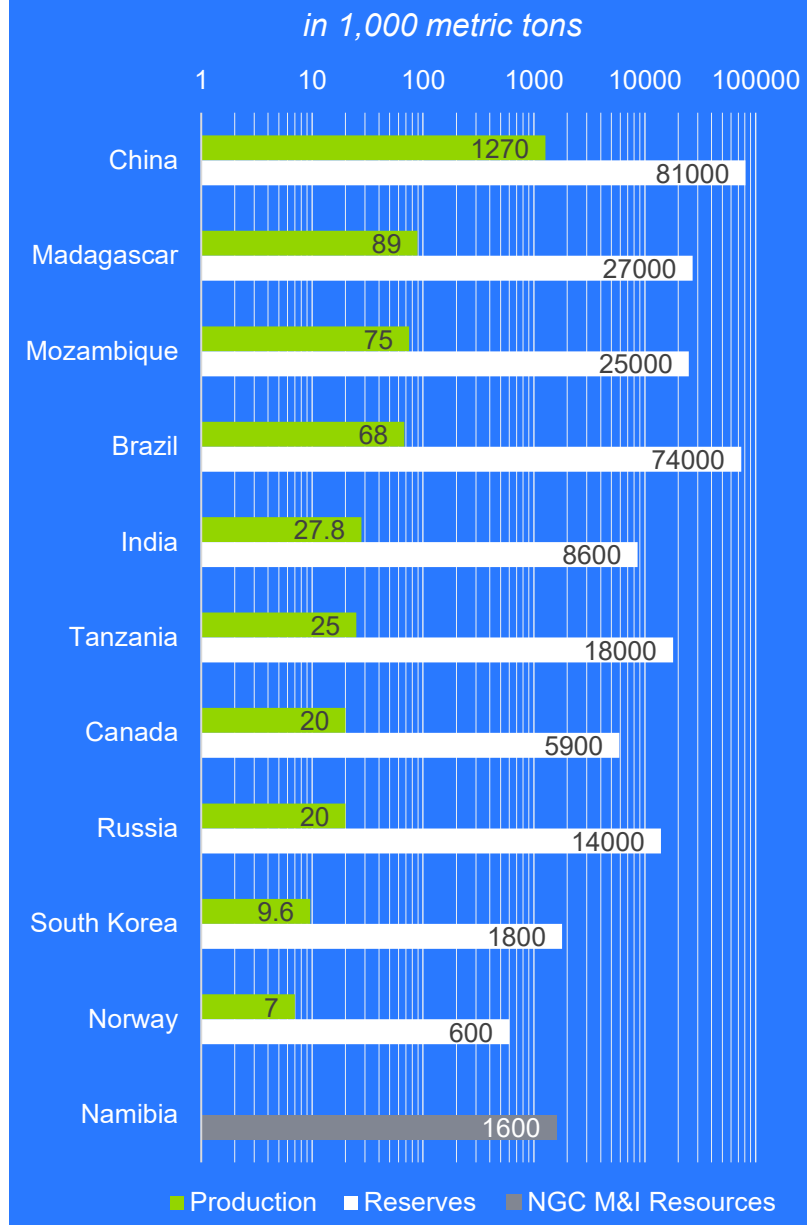


GLOBAL GRAPHITE MARKET

INVESTMENT FAVORS STABLE JURISDICTIONS



Source:
IAI: The Fraser Institute 2023
GPI: Institute for Economics and Peace (IEP) 2024
EFI: Heritage 2025
Statista February 2025
U.S. Geological Survey, 2025





STABLE INDUSTRIAL BASE & UPSIDE LEVERAGE

A MADE IN CANADA CRITICAL MINERALS SOLUTION

UPSIDE LEVERAGE:

Massive Growth In The EV Battery Space

STABLE INDUSTRIAL BASE:

20% US Market Share
+30 years serving over 100 Industrial Clients



INNOVATION UNLEASHED

ADVANCING MINING

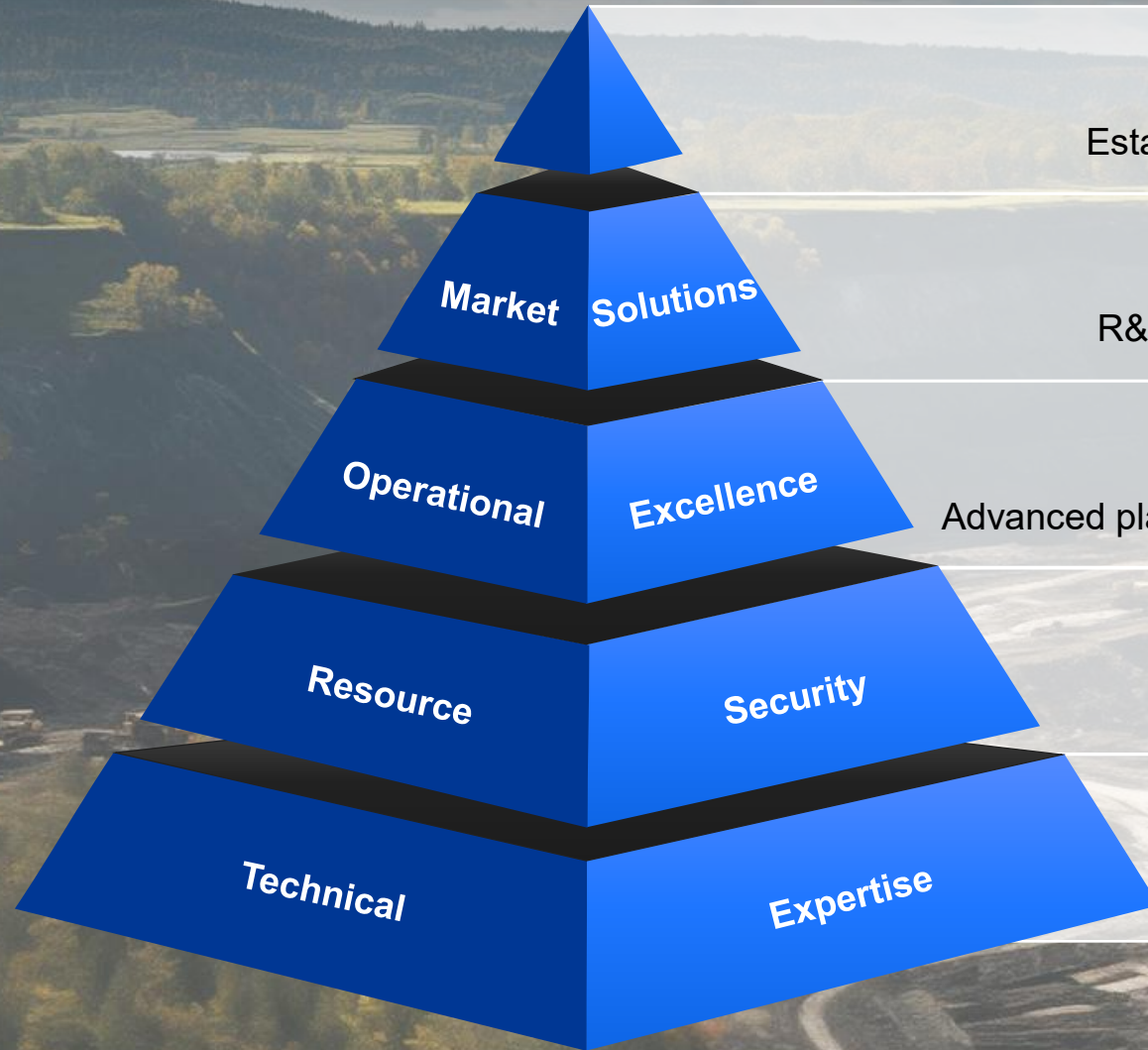


As the only producing natural graphite company in North America, Northern is focused on becoming one of the first vertically integrated, mine-to-battery materials companies supplying electric vehicle markets in North America and Europe with high-performance carbons for tomorrow's batteries.



OUR STRATEGY

BUILDING A VERTICALLY INTEGRATED MINING COMPANY



Path to Off-Take & Market Entry:

Establishing off-take agreements (typically 6-12 months)



BAM Product Development:

R&D and commercialization (typically a 1-year process)



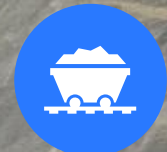
BAM Processing & Execution:

Advanced planning for processing (typically 2 years to execution)



Active Mine & Advanced Permitting:

Fully permitted mines/projects (typically 5-10 years)



Mining & Carbon Expertise:

Veteran Industry professionals





OUR COMMITMENT

REDEFINING GRAPHITE WITH UNIQUE & AMBITIOUS ESG GOALS



INCLUSION, EQUITY & DIVERSITY

Empowering diversity – an inclusive workplace for all



PARTNERING LOCALLY

Stronger together – building local partnerships with First Nations focus



HEALTH & SAFETY

Safety first – everywhere, always, for everyone



SUSTAINABLE MINING

Focusing on long-term responsibility by using solar energy & hydropower



DECARBONIZING

A greener future – low-emission production through renewable energy



GROWING PRODUCTION NEAR TERM ORGANIC GROWTH



TARGET OF 100,000 TPY NATURAL GRAPHITE AT MORE THAN 3.29 MT OF M&I RESOURCE AND POTENTIAL TO GROW

LAC DES ILES, CANADA 25,000 TPY



- North America's only producing graphite mine: 30+ year production history
- Modular expansion potential

OKANJANDE, NAMIBIA 31,000 TPY IN PHASE I



- Past producing mine on care & maintenance
- Rebuilding a greener, more sustainable mine
- Modular expansion potential

BISSETT CREEK, CANADA 44,000 TPY IN PHASE I



- 100%-owned, near construction ready
- Modular expansion potential

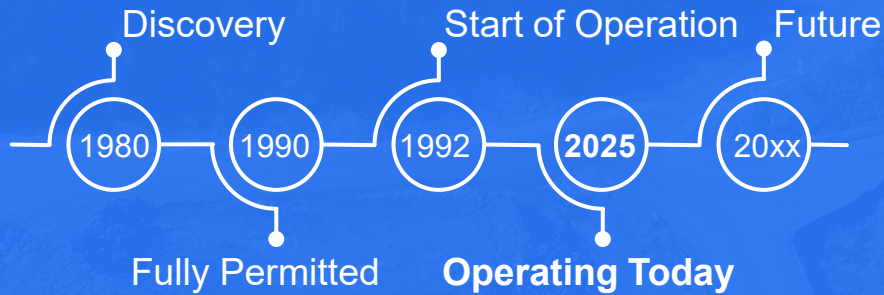


LAC DES ILES (LDI)

NORTH AMERICA'S ONLY PRODUCING GRAPHITE MINE



Mine History



Status

Operating



Quality



35 years

Proven Graphite Production

Operation



Nameplate Capacity **25 kt**

213 kt Measured and Indicated Resources



20°35'58.1"S
16°37'23.3"E

500 m



LAC DES ILES (LDI)

NORTH AMERICAS ONLY PRODUCING NATURAL GRAPHITE MINE



PRODUCING ASSET

- Currently producing 10-15,000 tpy of graphite concentrate
- Nameplate capacity of 25,000 tpy
- Expansion Potential
- Located 150 km northwest of Montreal, Quebec



PROVEN VALUE

- Battery-grade graphite
- Established customer base
- Cash generating asset
- Updated mineral resource shows potential to extend mine life by 8 years
- 213,000 tons of M&I Resources with potential to grow⁽¹⁾



PATH FORWARD

- Pursuing C\$10M pit extension
- Low-cost, timely expansion to meet market demand by leveraging the fully permitted mine, plant and tailings facilities
- Mine life can be extended and production expanded via drilling of exploration targets and processing material from wholly-owned Mousseau deposit

(1) Mineral resources that are not mineral reserves have not demonstrated economic viability. There is no certainty that any part of a mineral resource will ever be converted into mineral reserves.

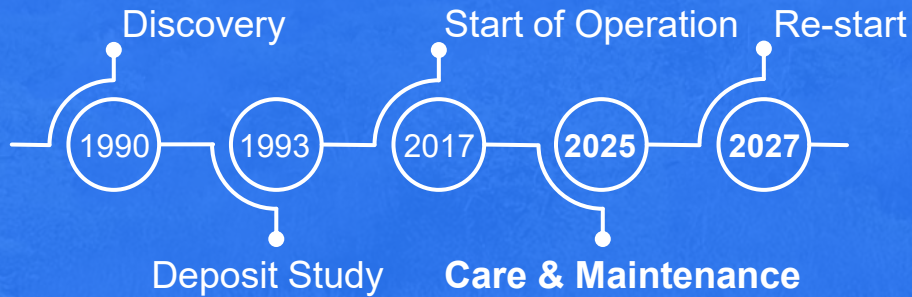


OKANJANDE

NEAR-TERM, LOW-COST PRODUCTION POTENTIAL



Mine History



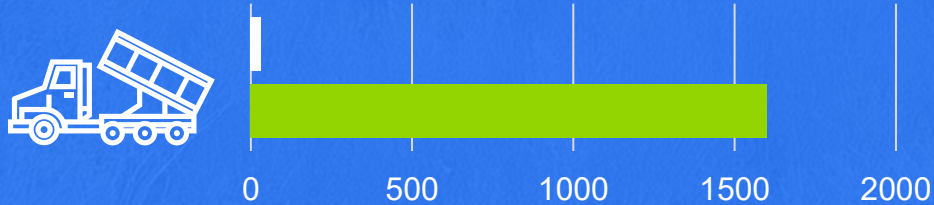
Power

Planned **20 MW** On-site Solar Power Field 

Water

 **Secured** Supply via Eastern National Water Canal

Operation



Planned Annual Capacity **31 kt**
1600 kt Measured and Indicated Resources



20°35'58.1"S
16°37'23.3"E
1000 m



OKANJANDE PROJECT

NATURAL GRAPHITE MINING PROJECT IN NAMIBIA



QUALITY LOCATION

- Located in Namibia, one of Africa's finest mining jurisdictions
- Close to Road and Rail
- Access to European and North American markets via Walvis Bay deep water port (288 km away)



PROVEN VALUE

- Fully permitted, former producing mine (2017-2018)
- Water and power secured
- Battery-grade graphite
- Substantial growth potential based on large, hard rock resource
- 1.6 Mt of graphite of M&I Resources⁽¹⁾



PATH FORWARD

- One year to restart from construction decision
- Expected to resume operations at 31,000 tpy
- Capex of \$34.6M
- Opportunity to add production at a lower cost and with a shorter time to market than competing projects

(1) Mineral resources that are not mineral reserves have not demonstrated economic viability. There is no certainty that any part of a mineral resource will ever be converted into mineral reserves.

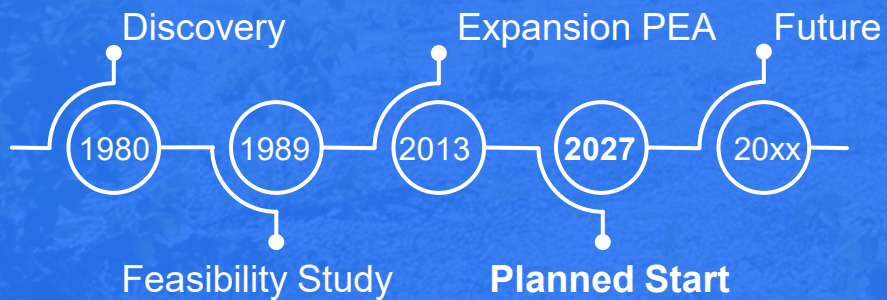


BISSETT CREEK

POTENTIAL TO GROW IN NORTH AMERICA



Mine History



Status

Advanced

Permitting



Our duty



Favorable

ESG

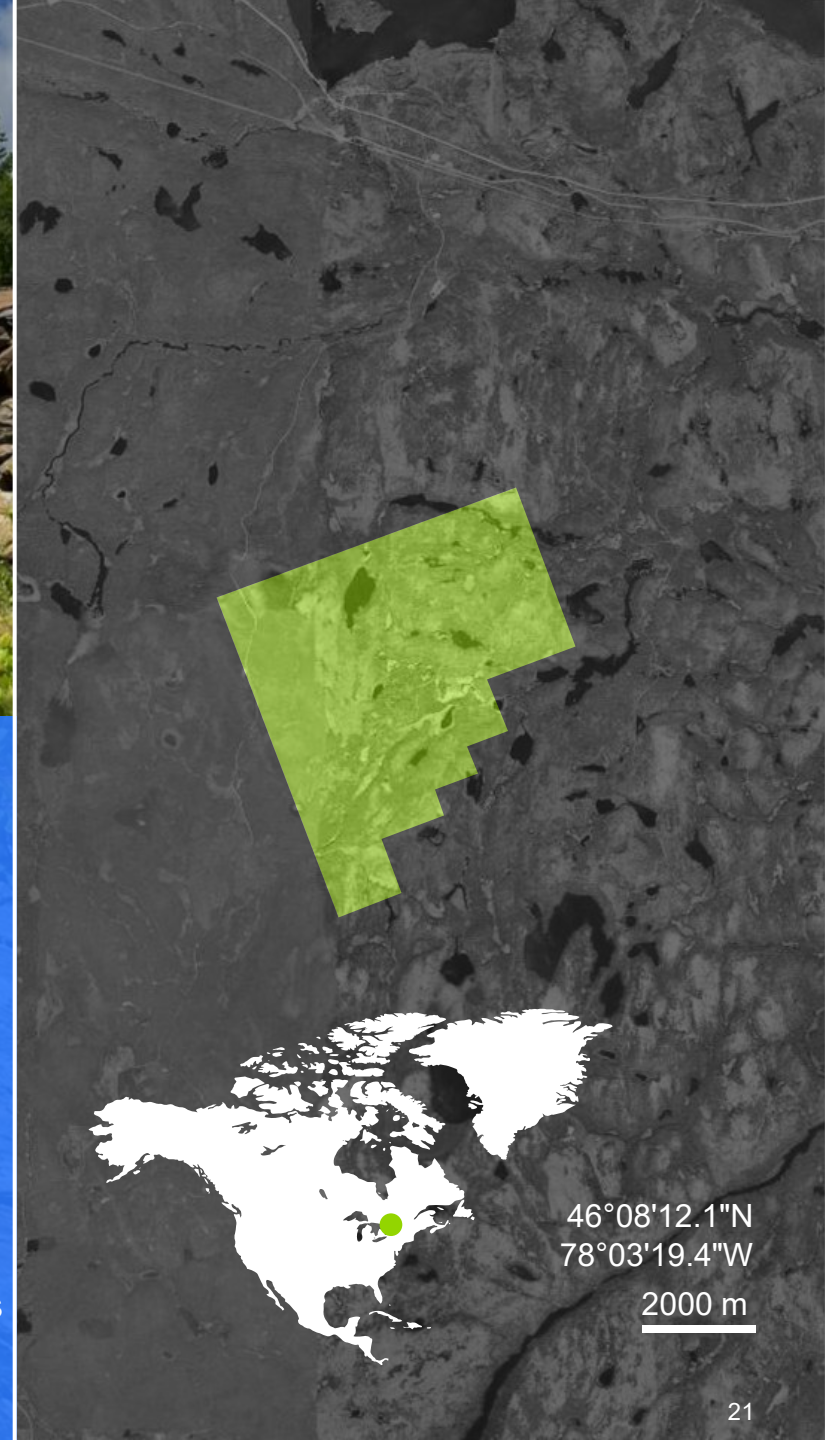
Profile

Operation



Planned Annual Capacity **44 kt**

1200 kt Measured and Indicated Resources



46°08'12.1"N
78°03'19.4"W

2000 m



BISSET CREEK PROJECT

LARGE NATURAL GRAPHITE MINING PROJECT IN ONTARIO



QUALITY LOCATION

- Located in Ontario, 15 km from Trans-Canada highway
- Five hours by road to Port of Montreal and access to international markets
- Power, material and equipment suppliers nearby



PROVEN VALUE

- Battery-grade graphite
- Permitting well advanced, PEA & Feasibility Studies completed
- 1.2 Mt graphite in M&I resources⁽¹⁾
- Ideally suited to supply Baie-Comeau BAM plant



PATH FORWARD

- Staged, two-phase development to sync with market demand
- Initial production of 44,000 tpy
- Capital cost of ~ \$115M⁽²⁾

(1) Mineral resources that are not mineral reserves have not demonstrated economic viability. There is no certainty that any part of a mineral resource will ever be converted into mineral reserves.

(2) Capital costs are based on an update and sensitivity analysis of the PEA and do not represent PEA base case economics. Mineral resources that are not mineral reserves do not have demonstrated economic viability. The PEA is preliminary in nature and there is no certainty that the results of the PEA will be realized. See December 12, 2018 Press Release.



INNOVATION UNLEASHED POWERING BATTERIES



In a world where electrification will underpin energy security, we are helping to deliver sustainable energy for a cleaner tomorrow, with high-performance Battery Anode Material, the largest mineral component of Lithium-Ion batteries.

Our mines and planned BAM facilities are located in favorable mining jurisdictions, reducing supply chain risk to end-markets like Europe and North America.



FROM MINE TO BATTERY-READY GRAPHITE

VERTICAL INTEGRATION OF NATURAL GRAPHITE



MINE & PROCESSING



NAMIBIA / CANADA

NATURAL
GRAPHITE
FLAKES



MILLING & SHAPING



NAMIBIA / CANADA

SPHERICAL
PURIFIED
GRAPHITE



PURIFICATION



EUROPE / CANADA



COATING

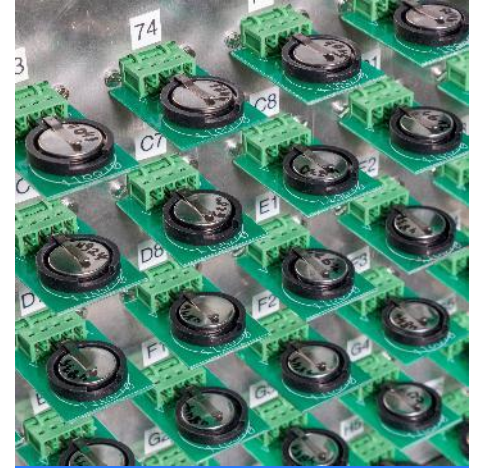


EUROPE / CANADA

COATED
SPHERICAL
PURIFIED
GRAPHITE



BATTERY TESTING



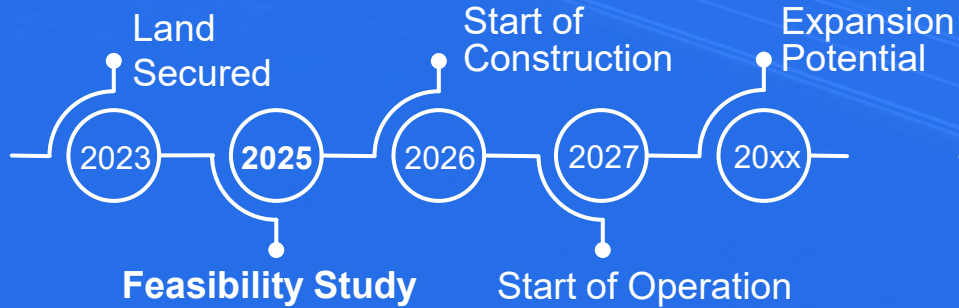
GERMANY



BAIE-COMEAU PLANNED BATTERY ANODE MATERIAL PLANT



Plant Timeline



Status

Awaiting
Power Allocation



Location



Deepwater **Port**
Connecting Canada
to the World

Land Plot



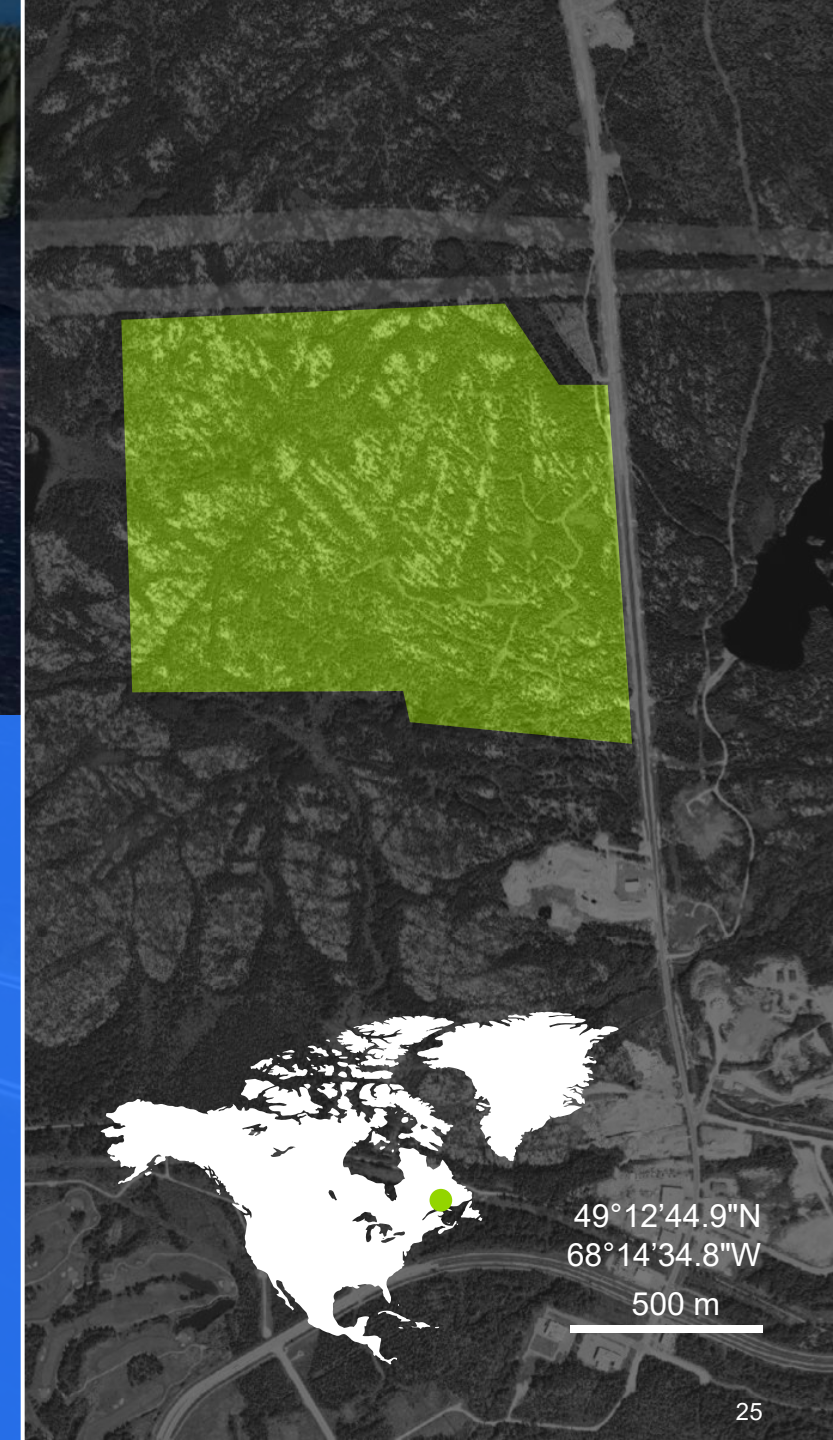
1.2M m²
in the Industrial
Port Area

Power

5.4 GW 
Access to Affordable,
Green Hydro Power

Capacity

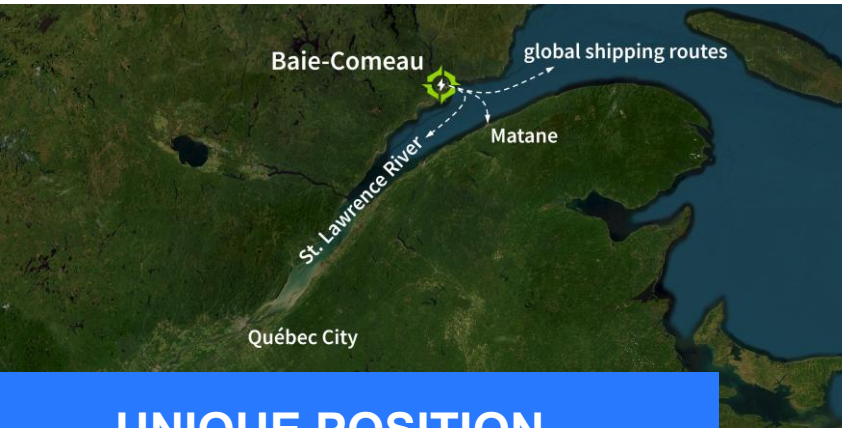
Phase I **20k tpy**
Capacity with Modular
Expansion Potential





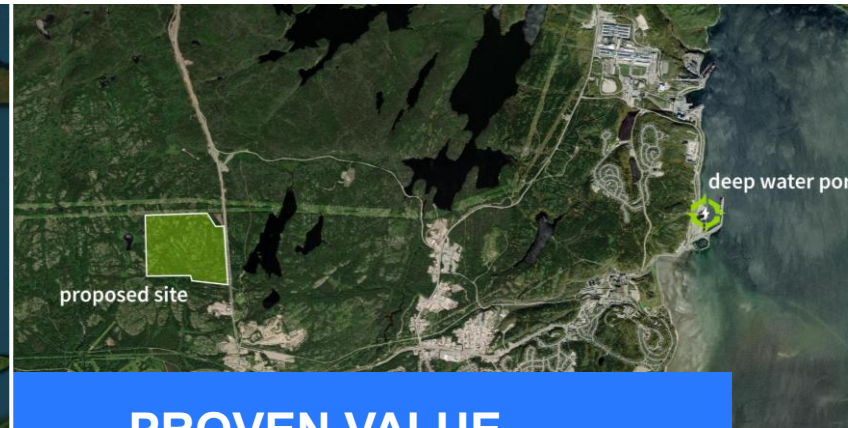
BAIE-COMEAU

DEVELOPING A GATEWAY TO GLOBAL BATTERY MARKETS



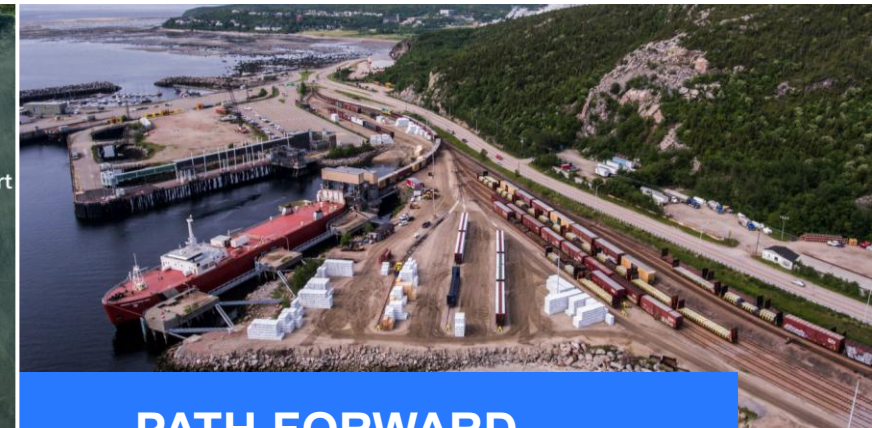
UNIQUE POSITION

- Strategically positioned to supply premium, sustainable graphite
- Located near Quebec's graphite belt
- Existing power supply, transport links, and industrial space make Baie-Comeau ideal for large-scale projects



PROVEN VALUE

- Access to affordable, green, hydroelectric power
- Support from town and port authorities
- Enabling Critical Minerals Gateway to regional and global markets
- Proven BAM technology from global partners



PATH FORWARD

- Greenfield and Brownfield sites under consideration in port industrial zone
- First Production targeted for 2027
- Construction in modules to de-risk investments and tailor to market growth

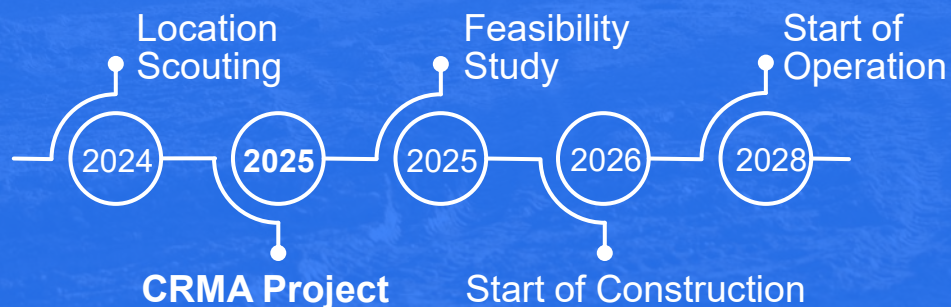


FRANCE BAM PROJECT

"STRATEGIC STATUS" UNDER CRITICAL RAW MATERIALS ACT



Plant Timeline



Market

Strategic Proximity to **EU** Gigafactories



Location



Inland **Port**
Train and Heavy Road
Connection Available

Land plot



Brown or Green
Field **Site** on
Industrial Park

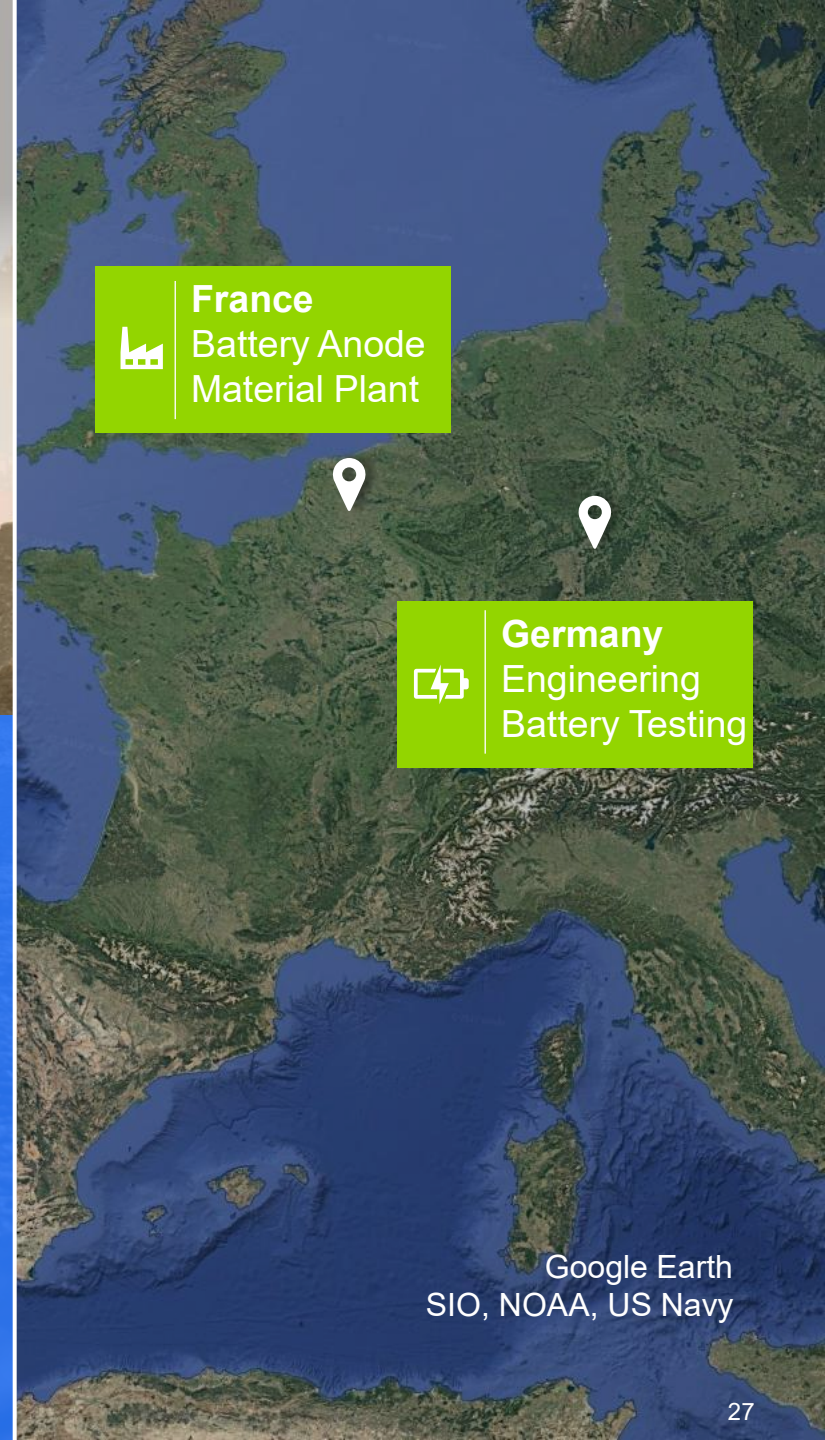
Power

Low CO₂
Power Available



Capacity

Initial **20k tpy**
Capacity with Expansion
Potential



France
Battery Anode
Material Plant



Germany
Engineering
Battery Testing

Google Earth
SIO, NOAA, US Navy



FRANCE BAM PLANT

DESIGNATED "STRATEGIC" CRITICAL RAW MATERIAL PROJECT



- **Strategic Project** Status Facilitates:
 - Fast-tracked permitting
 - Access to financing and off-take support
 - Enhanced visibility
- Estimated Investment of **€159M**:
 - 20,000 tpy Phase I production
 - Pre-purification, milling, shaping in Namibia
 - Purification and Coating in France
 - Development / analytics in Frankfurt laboratory





INNOVATION UNLEASHED

REDEFINING CARBON

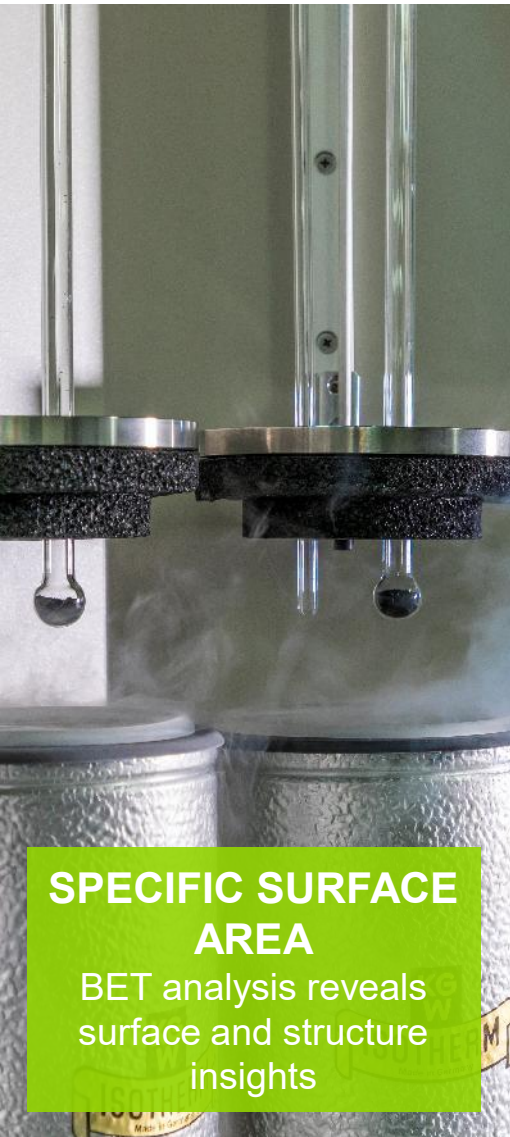


We are driving innovation for the next generation of energy-efficient, long-lasting batteries. Our strategy is to become a vertically integrated mine-to-market company meeting the growing needs of the North American and European market, from flake graphite for legacy industry to natural graphite-based anode active materials.



CORE DEVELOPMENT CAPABILITIES

COMPREHENSIVE ANALYTICS FOR ENERGY STORAGE MATERIALS

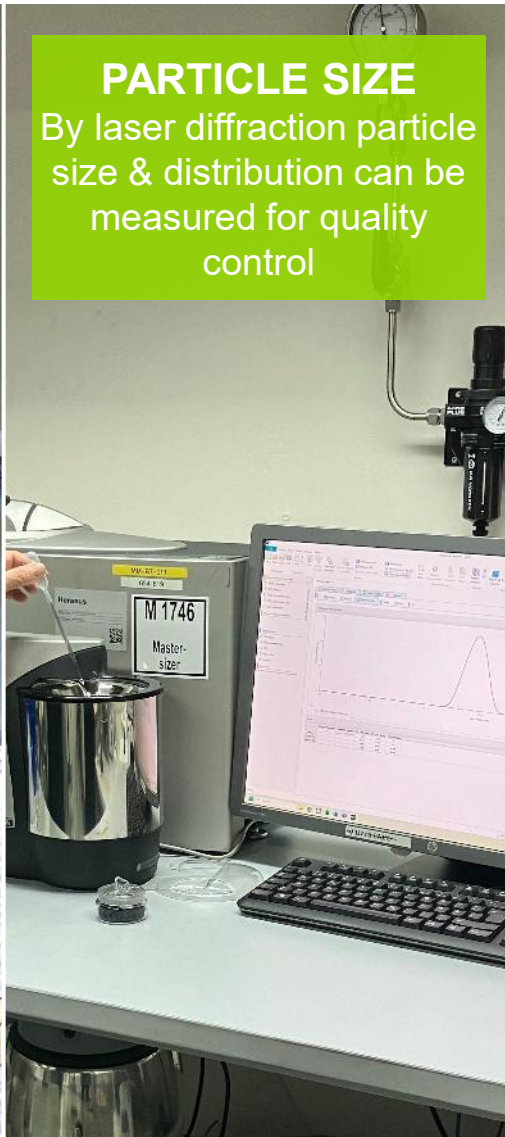


SPECIFIC SURFACE AREA

BET analysis reveals surface and structure insights

PARTICLE SIZE

By laser diffraction particle size & distribution can be measured for quality control



SURFACE MORPHOLOGY

SEM imaging identifies particle size and shape



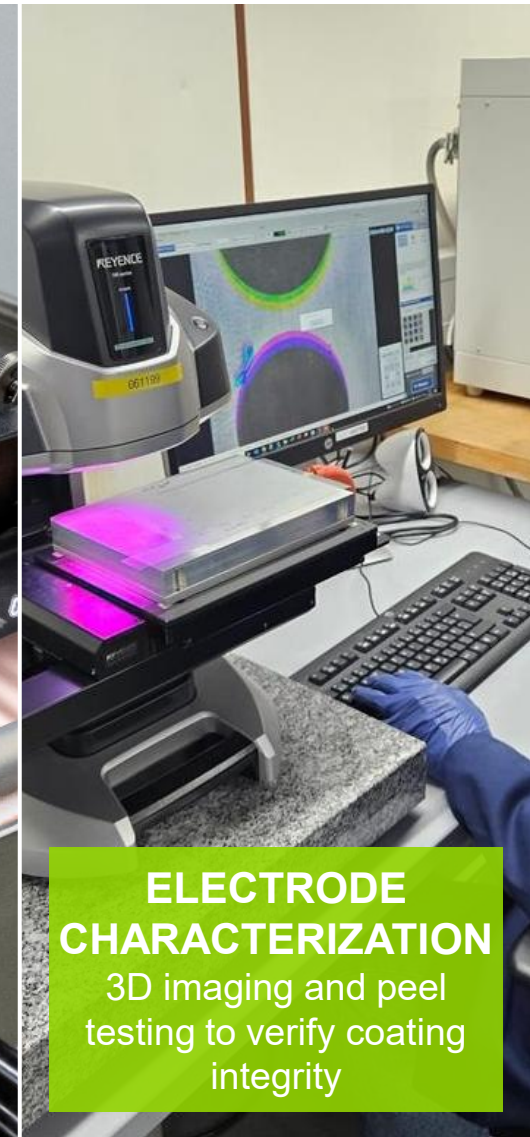
ELECTRODE PREPARATION

Optimized slurry blending for high-quality coatings and battery cells



ELECTRODE CHARACTERIZATION

3D imaging and peel testing to verify coating integrity





NEXT GENERATION CARBONS

DRIVEN BY OUR CARBON EXPERTISE



NGF:

A highly purified natural flake graphite



SPG:

A highly purified and spherical shaped natural graphite



BAM:

A highly purified, shaped and coated natural graphite Battery Anode Material

PSD



Tunable particle
SIZE
distribution

Tap Density



Optimized carbon
TAP
density

SSA

Engineered specific
SURFACE
area

Purity

High Carbon

PURITY

up to 99.99 %



Coating

Apply

COATINGS



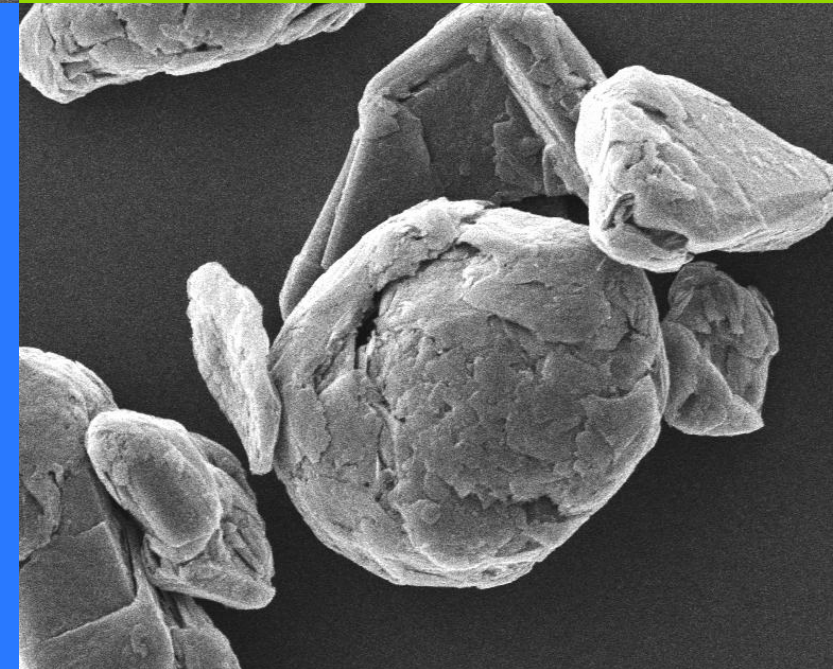
to enhance capacity

Crystallinity

Controlled

CRYSTAL

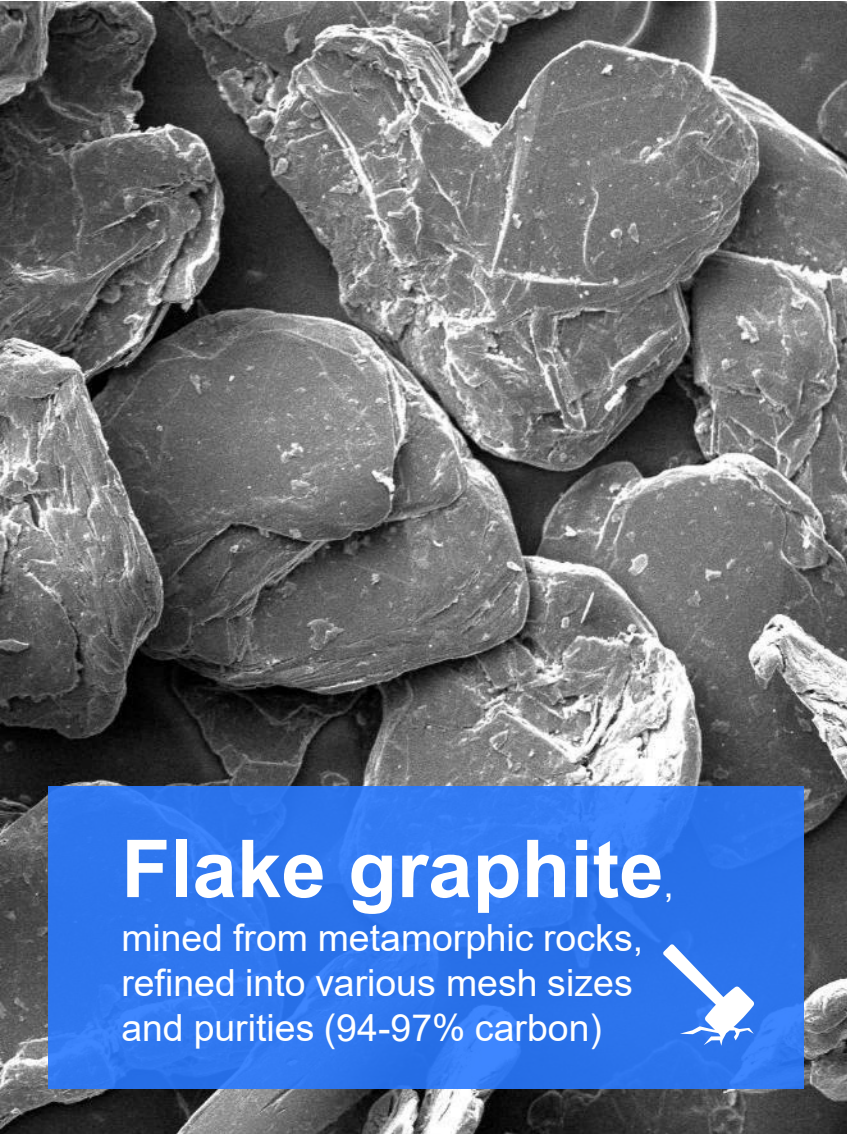
-LINITY of graphite





UNLOCKING THE POTENTIAL OF NATURAL FLAKE GRAPHITE

VERSATILE APPLICATIONS ACROSS INDUSTRIES



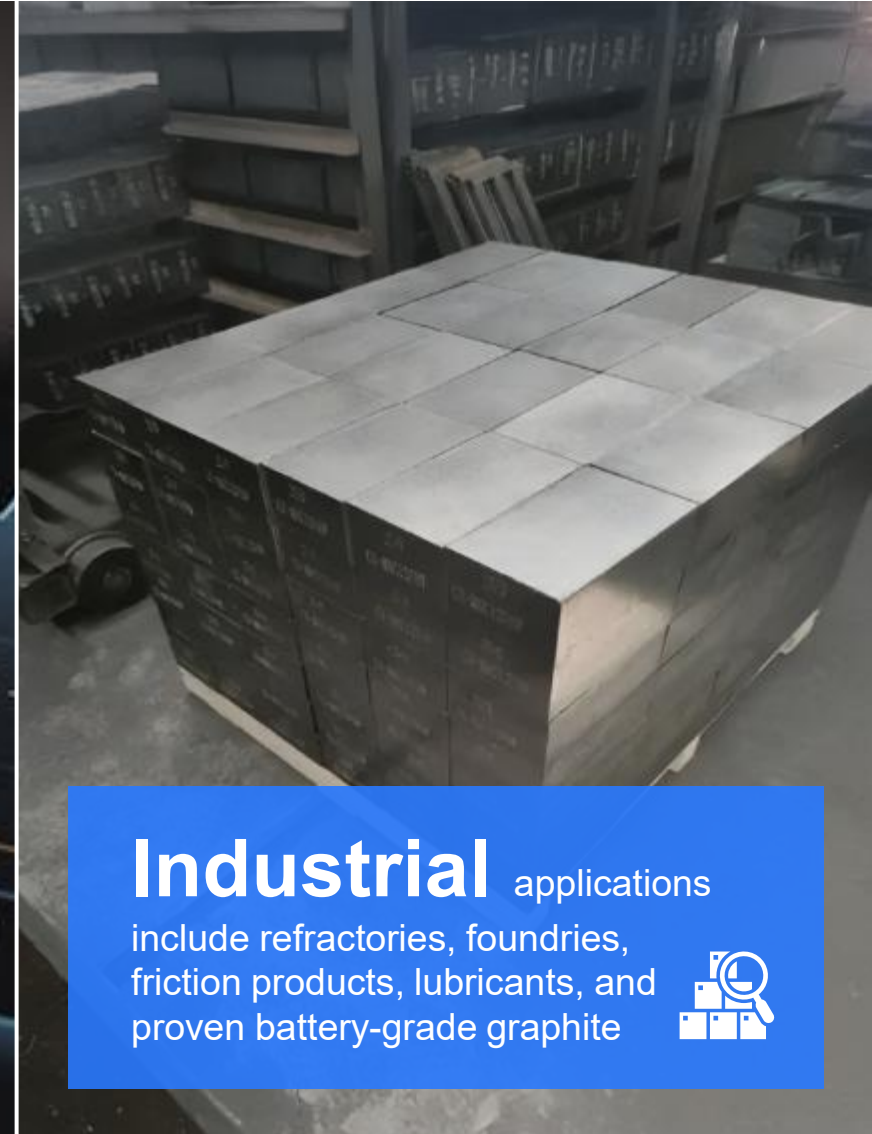
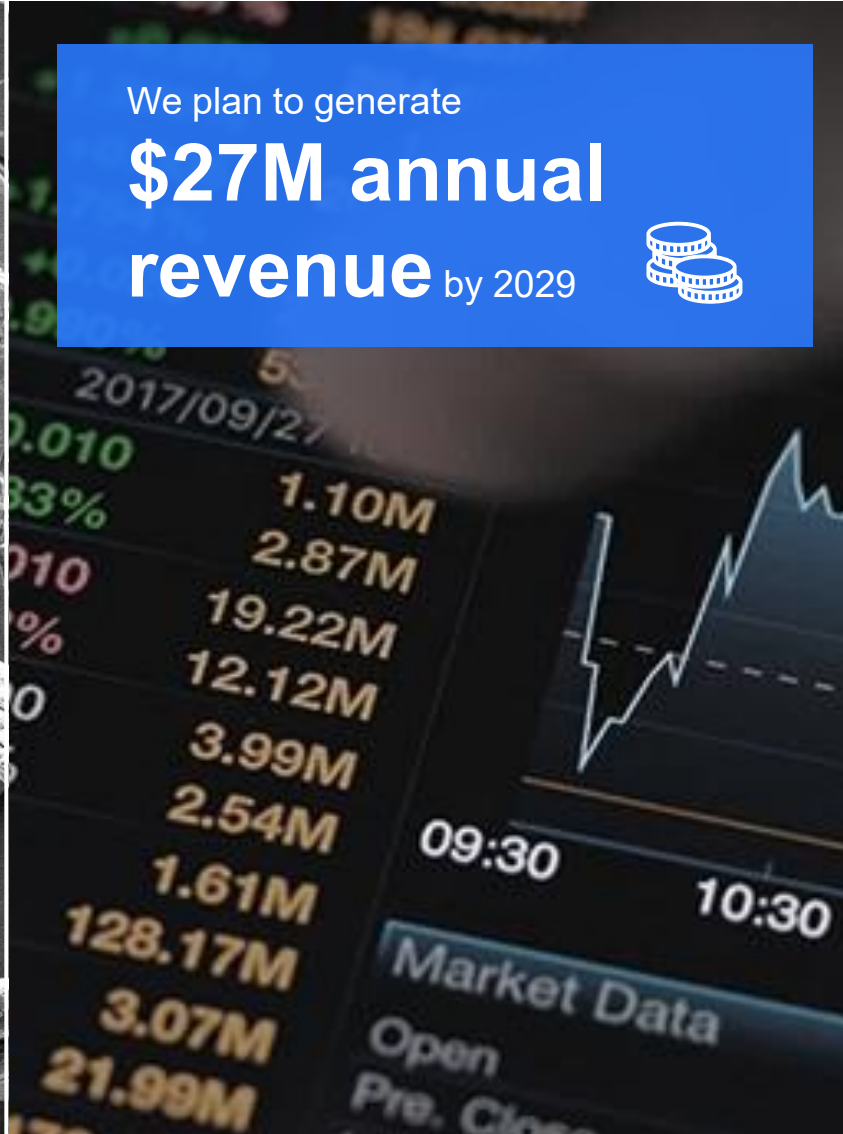
Flake graphite,

mined from metamorphic rocks,
refined into various mesh sizes
and purities (94-97% carbon)



We plan to generate

**\$27M annual
revenue** by 2029



Industrial applications

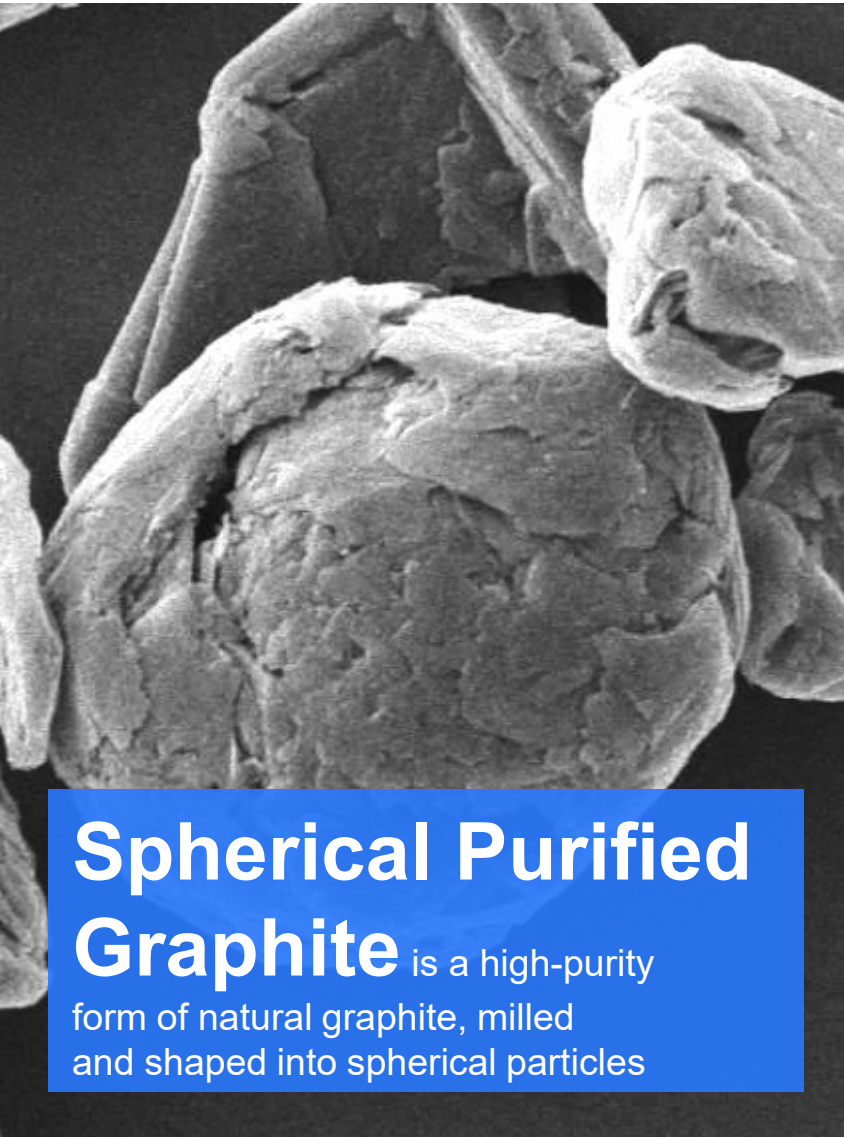
include refractories, foundries,
friction products, lubricants, and
proven battery-grade graphite





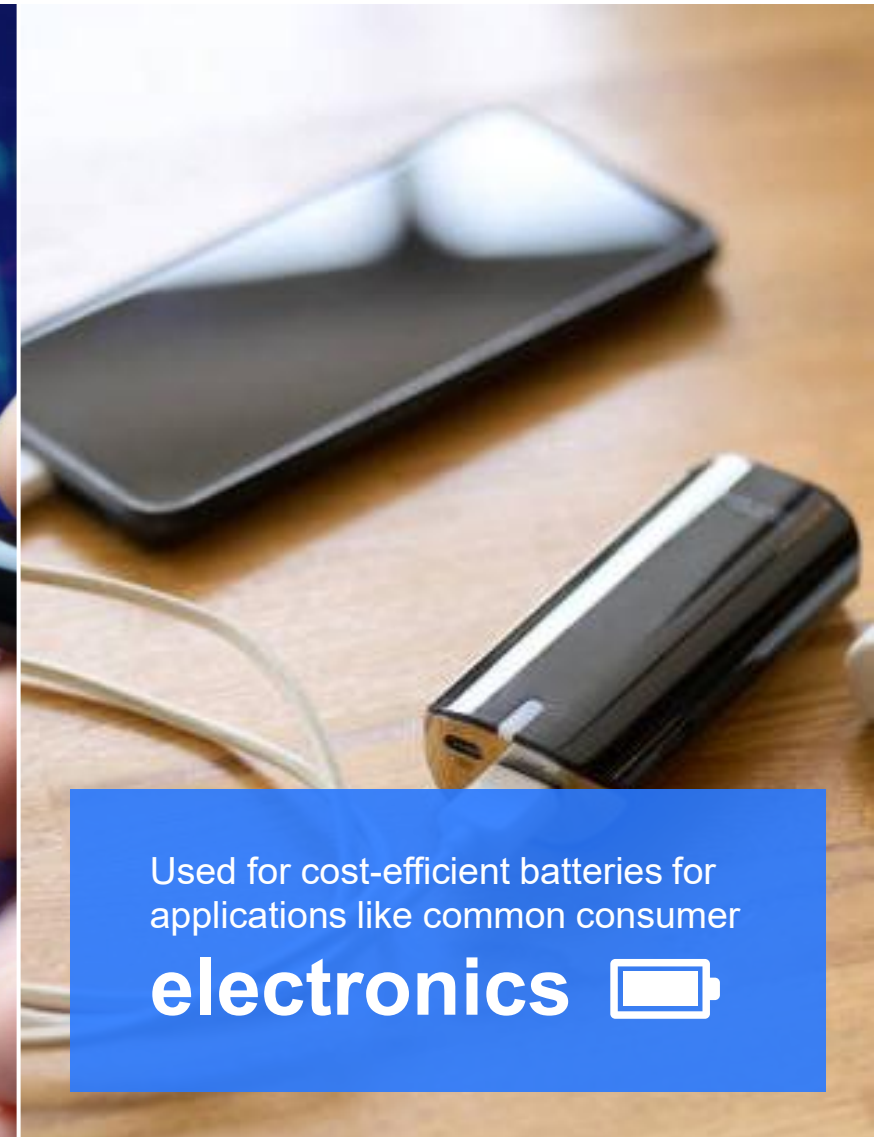
SPHERICAL PURIFIED GRAPHITE FOR ENERGY STORAGE

COST-EFFECTIVE SOLUTIONS FOR CONSUMER ELECTRONICS



Spherical Purified Graphite

is a high-purity form of natural graphite, milled and shaped into spherical particles



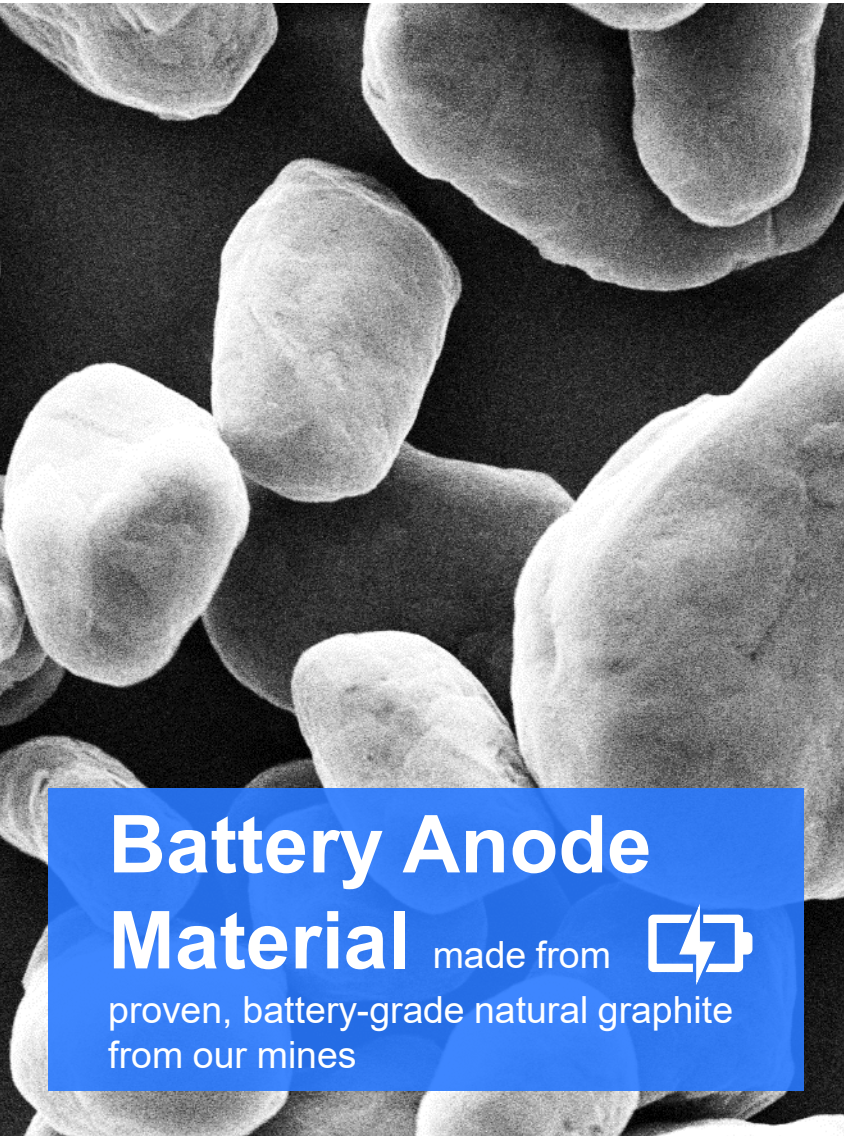
Used for cost-efficient batteries for applications like common consumer


electronics 



NATURAL GRAPHITE: A KEY MATERIAL FOR BATTERY ANODES

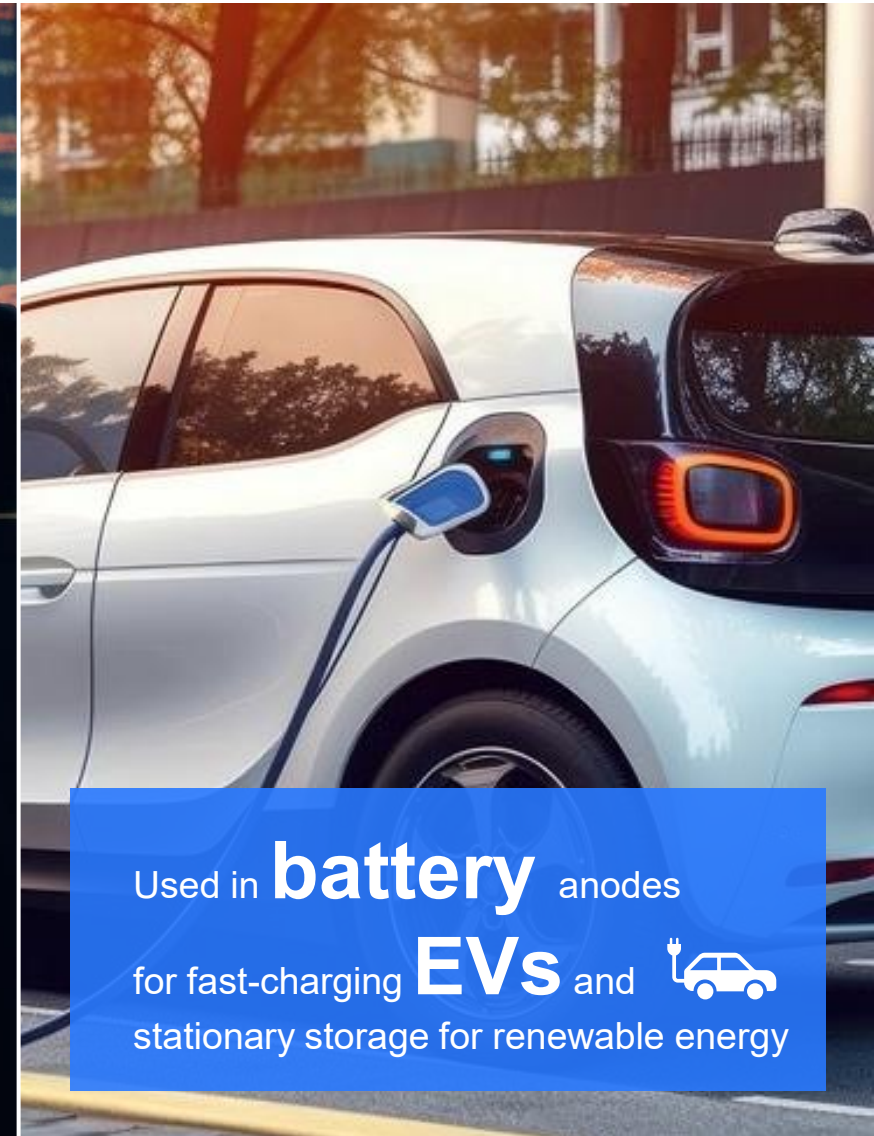
CRITICAL COMPONENT FOR LITHIUM-ION BATTERIES




**Battery Anode
Material** made from 
proven, battery-grade natural graphite
from our mines

We plan to generate

**\$370M annual
revenue** by 2029



Used in **battery** anodes
for fast-charging **EVs** and 
stationary storage for renewable energy



NORTHERN GRAPHITE

OUR VALUE PROPOSITION



As North America's only natural graphite producer,
we are leveraging our First Mover Advantage to help drive toward a cleaner, electric future
by delivering high-quality, ethically- and sustainably-mined graphite to for industrial uses
that are critical to economic growth and emerging and growing demand for battery- and storage technologies.



WORKING TOGETHER NOW TO ENABLE A GREENER TOMMOROW OUR COMMITMENT

CARE

Our people, Our communities,
Our customers, Our World.

We are not doing this alone,
we are part of the solution.

COLLABORATE

CREATE

The change starts now, we are not waiting but
improving every day, for us and for our children.

We are more than just the energy transition;
we supply products that help the world decarbonize.

COMMIT





EXPERIENCED LEADERSHIP

GLOBAL GRAPHITE INDUSTRY & MINING EXPERTISE



HUGUES JACQUEMIN
CEO & Board Director

- 30+ years of leadership in Fortune 500 and private equity firms
- Expertise in graphite mining, lithium-ion battery materials, graphene, and synthetic graphite
- A visionary driving carbon material innovations and company growth



NIALL MOORE
Interim CFO

- Appointed interim CFO on Nov. 30, 2024
- 35+ years in financial management and reporting, including Ernst & Young and mining companies
- Chartered Professional Accountant with deep industry knowledge



MAXIMILIAN MEIER
COO

- Leads global manufacturing strategy, focusing on ramp-up and high-performance batteries
- Expert in chemical industry production holding a Master's in Chemical and Biochemical Engineering
- VP of Operations & Engineering for Northern's Battery Materials Division



DAVE MARSH
CTO

- 40+ years of expertise in process engineering, project management, and operations
- Former COO of Avalon Advanced Materials with deep industry knowledge
- Holds a B.Sc. (Hons) and F.AusIMM.CP credentials



MICHAEL GRIMM
CCO & President of NGC BM

- 15+ years of international business experience
- Track record of leading and managing global teams in the field of market development for next generation battery chemistries
- Business-development and strategic management with clients across Europe, America and Asia



EXPERIENCED BOARD

GLOBAL MINING & INDUSTRY EXPERTISE



GREG BOWES

Chairman

- Founder and former CEO of Northern Graphite
- 40+ years of experience in mining, engineering, and capital markets
- Holds a B.Sc., MBA, and P.Geo. credentials.



CAM BIRGE

Director

- Founder and former CEO of Industrial Minerals Inc., which led to Northern's formation
- 20+ years of strategic advisory expertise
- Holds a B.A., B.Ed., and M.Sc.



SAMANTHA ESLEY

Director

- 30+ years in mining with P.Eng., M.A.Sc., and FCAE distinctions
- Board member at Paramount Gold Nevada and Industry Chair at CAE
- Former President of the Canadian Institute of Mining



FRANK O'BRIEN-BERNINI

Director

- 38+ years of executive leadership in sustainability and R&D
- Former Chief Sustainability Officer at Owens Corning (2007–2022)
- A pioneer in sustainability initiatives and innovation



HUGUES JACQUEMIN

CEO & Board Director

- 30+ years of leadership in Fortune 500 and private equity firms
- Expertise in graphite mining, lithium-ion battery materials, graphene, and synthetic graphite
- Visionary driving carbon material innovations and company growth



ROAD TO FULL MINE-TO-BATTERY CAPABILITIES

MAJOR MILESTONES

- ✓ LDI Resource Estimate, Adds ~ 8 Years Mine Life
- ✓ LDI Phase II Exploration
- ✓ Acquisition of Battery Lab in Germany
- New Production from extended LDI Pit
- BAM Plant I Start of Construction
- Okanjande Mine Construction
- LDI and Okanjande at nameplate Capacity
- Targeting BAM production of 20,000 tpy
- BAM Plant II start of operations
- Targeting BAM output in Canada and Europe
- Targeting Mine Output in Canada and Namibia
- Targeting Offtake Agreements for North America and Europe



- ✓ First BAM Demonstrator Samples Shipped to Customers
- ✓ France BAM Facility Awarded “Strategic Status” under CRMA
- LDI Pit Expansion Planning - est. C\$10M
- Okanjande Mine Restart at 31,000 tpy
- BAM Plant I Start of Operation
- BAM Plant II Start of Construction
- Targeting combined 40,000 tpy BAM production
- Bissett Creek Mine Phase I Production
- Expansion of BAM production



CAPITAL STRUCTURE

FOCUSED ON CASH MANAGEMENT

As at August 31, 2025

Basic Shares Outstanding ⁽¹⁾	134,252,293
Options & Restricted Share Units	12,514,000
Fully-Diluted	146,766,293
Share Price (<i>August 31, 2025</i>)	C\$0.17
Basic Market Cap	C\$22.8M

TSX-V
OTCQB
FRA & XSTU

NGC
NGPHF
ONG

(1) includes 5,698,340 Shares held by Insiders



INNOVATION UNLEASHED

DE-RISKING INVESTMENT IN THE EV REVOLUTION

WESTERN FOCUS

- Supply chain security amid geopolitical uncertainty
- One of leading Western world alternatives to China graphite dominance
- Meeting rising graphite demand in EV markets

FIRST MOVER ADVANTAGE

- Only producer of natural graphite in North America
- Established customer relationships
- Advanced talks with battery makers and governments

MINE-TO-MARKET INTEGRATION

- Unique vision and value proposition
- North American vertical integration as competitive advantage
- Graphite sourced from our mines to enable modular BAM solutions



INNOVATION UNLEASHED

ADVANCING MINING • POWERING BATTERIES • REDEFINING CARBON

TSXV: NGC | OTCQB: NGPHF | FRA & XSTU: 0NG

INFO@NORTHERNGRAPHITE.COM +1 613 271 2124

NORTHERNGRAPHITE.COM

